

# The Human *GULO* Pseudogene— Evidence for Evolutionary Discontinuity and Genetic Entropy

Jeffrey P. Tomkins, Institute for Creation Research, 1806 Royal Lane, Dallas, Texas.

## Abstract

Modern genomics provides the ability to screen the DNA of a wide variety of organisms to scrutinize broken metabolic pathways. This wealth of data has revealed wide-spread genetic entropy in human and other genomes. Loss of the vitamin C pathway due to deletions in the *GULO* (L-gulonolactone oxidase) gene has been detected in humans, apes, guinea pigs, bats, mice, rats, pigs, and passerine birds. Contrary to the popularized claims of some evolutionists and neo-creationists, patterns of *GULO* degradation are taxonomically restricted and fail to support macroevolution. Current research and data reported here show that multiple *GULO* exon losses in human, chimpanzee, and gorilla occurred independently in each taxon and are associated with regions containing a wide variety of transposable element fragments. Thus, they are another example of sequence deletions occurring via unequal recombination associated with transposable element repeats. The 28,800 base human *GULO* region is only 84% and 87% identical compared to chimpanzee and gorilla, respectively. The 13,000 bases preceding the human *GULO* gene, which corresponds to the putative area of loss for at least two major exons, is only 68% and 73% identical to chimpanzee and gorilla, respectively. These DNA similarities are inconsistent with predictions of the common ancestry paradigm. Further, gorilla is considerably more similar to human in this region than chimpanzee—negating the inferred order of phylogeny. Taxonomically restricted gene degradation events are emerging as a common theme associated with genetic entropy and systematic discontinuity, not macroevolution.

**Keywords:** *GULO* pseudogene, Human-ape DNA similarity, Comparative genomics, Vitamin C

## Introduction

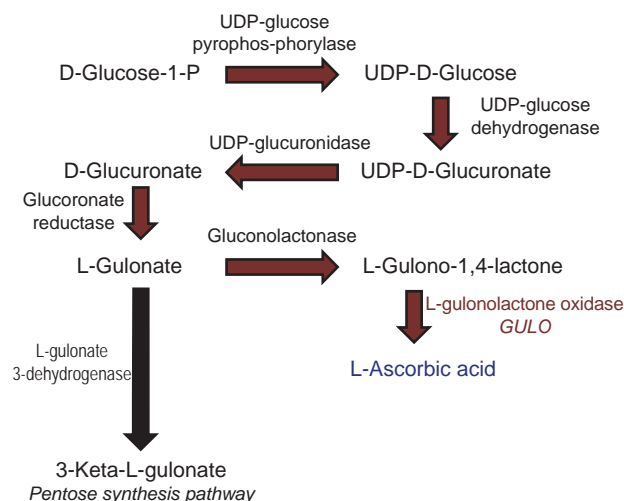
Vitamins are organic compounds which organisms must acquire from their environment because they cannot synthesize them, at least not at levels sufficient to maintain their health. They serve as precursors to cofactors that function with enzymes in both central and secondary metabolic pathways. In fact, the first such compound discovered was labeled a “vital amine” (where we get the term “vitamin”) that was isolated from rice husks (thiamine/Vitamin B<sub>1</sub>) and prevented the disease beri-beri (Funk 1912). An organism that requires dietary vitamins is referred to as a vitamin “auxotroph”. Patterns of vitamin auxotrophy across the schema of life are complicated and often involve complex patterns of organismal interdependence (Helliwell, Wheeler, and Smith 2013).

An emerging theme from the continuing progression of genomics research across the spectrum of eukaryotic life is the widespread decay of pathways for vitamin-synthesis (Helliwell, Wheeler, and Smith 2013). This paradigm is of great importance to the creationist model of genetic entropy which postulates that genomes are in a continual state of degradation over time, not forward progressing evolution (Sanford 2010). Indeed, several recent reports have shown that a considerable amount of recently acquired variation in the human exome (protein coding regions) the past 5000 to 10,000 years is associated with heritable disease (Fu et al. 2013; Tennessen et al. 2012).

Another important component of the creationist model of origins is the idea of molecular discontinuity between unrelated taxon (Tomkins and Bergman 2013). As will be demonstrated in this report, the enigma of the *GULO* pseudogene analyzed in the light of new genomic evidence most closely aligns with a creationist model incorporating both of these paradigms.

Degradation of the vitamin C pathway is an enigmatic case because many vertebrate species are able to synthesize this vitamin (Drouin, Godin, and Page 2011; Yang 2013). The anti-oxidant vitamin C is a water-soluble molecule that protects organisms from oxidative stress (Nowak, Carter, and Schnellmann 2000) and is essential to collagen production. Production of collagen is necessary to prevent development of the pathology known as scurvy (Gropper and Smith 2012). Other documented functions of vitamin C include its participation in the synthesis of carnitine, neurotransmitters, and the catabolism of tyrosine (Combs 2008; Gropper and Smith 2012; Padh 1990; Pohanka et al. 2012).

Biosynthesis of vitamin C is a multi-step process that starts in mammals with glucose as an initial substrate (Linster and Van Schaftingen 2007). The terminal enzyme in the pathway is L-gulonolactone oxidase which catalyzes the final step (fig. 1). The gene that encodes this enzyme is typically symbolized in the literature as *GULO*, *GLO*, or *Gulo*—the gene that is the focus of this report.



**Fig. 1.** Depiction of the biochemical pathway for vitamin C biosynthesis in vertebrates.

Loss of *GULO* gene function primarily impacts the cells ability to make vitamin C (Linster and Van Schaftingen 2007). In contrast, losing the function of genes for other enzymes in the vitamin C pathway directly affects the production of many important biomolecules in the cell because they are multifunctional (Linster and Van Schaftingen 2007). For example, losing gene function for gluconolactonase not only affects the synthesis of L-gulono-1,4-lactone, but also affects caprolactam degradation, the pentose phosphate pathway, and other processes (BRENDA database, <http://www.brenda-enzymes.org>). Thus, the standard belief among scientists is that the *GULO* gene may be “predisposed” to being lost or mutated (pseudogenization) compared to other genes because it makes an enzyme that is allegedly unnecessary for other biochemical pathways.

Although not life threatening when supplemented by external sources of vitamin C, the effects from loss of *GULO* function may be more complicated and pervasive in the cell than previously thought. There is recent evidence from research using a naturally occurring mouse *GULO* deletion mutant showing that multiple categories of gene expression in the nucleus are markedly affected by *GULO* inactivation (Jiao et al. 2011; Mohan et al. 2005). Thus, the deactivation of the *GULO* gene may be more closely related to the idea of cellular network optimization and not what is minimally required for the biochemical survival of the organism. This idea will be revisited later in this report in the summary and discussion.

### Evolutionary Anomalies of *GULO* Gene Loss and Degradation

The macroevolutionary enigmas and contradictions related to vitamin C biosynthesis exist at a variety of levels in the broad schema of life. The first is the fact that yeasts, plants, and animals all

use different pathways to synthesize it, so there is no clear ancestral pattern of origin for it in the alleged tree of life and it has arisen suddenly in major taxonomic groups. The yeasts produce a vitamin C variant called D-erythroascorbate from D-arabinose, plants synthesize vitamin C from GDP-D-mannose, and vertebrate animals make vitamin C from the final pathway substrate UDP-D-glucuronate (Hancock, Galpin, and Viola 2000; Linster et al. 2007; Linster and Van Schaftingen 2007; Smirnov 2001). In addition, it was recently found that *GULO* genes exist in the urochordate sea squirt and achordate sponge (Yang 2013). However, these invertebrates both possess *GULO* genes distinctly different in structure from those in vertebrates. It is unknown at this time what the exact nature of the vitamin C pathway is in these organisms.

Another evolutionary anomaly is that the main organ in which vitamin C is synthesized supposedly changed twice from the kidney to the liver during vertebrate macroevolution—at least once in birds and once in mammals (Birney, Jenness, and Hume 1980; Chatterjee 1973; Drouin, Godin, and Page 2011). Vitamin C is produced in the kidneys of non-teleost fishes, amphibians, and reptiles, but in the livers of mammals. And among bird taxa, it is a complete mixture and long-standing evolutionary enigma. Vitamin C is produced solely in the kidneys of some birds, just the livers in others, both livers and kidneys in others, and in a variety of taxon there is no detectable synthesis (Chaudhuri and Chatterjee 1969; Drouin, Godin, and Page 2011; Martinez del Rio 1997; Roy and Guha 1958).

Other anomalies are found when examining the presence and absence of vitamin C synthesis from a broad evolutionary perspective. Of particular note is the growing data set showing that cartilaginous and non-teleost bony fish species are able to synthesize vitamin C while no known teleost (ray-finned) fish has this capability, which is associated with the complete absence of the *GULO* gene (Drouin, Godin, and Page 2011; Wong et al. 2013; Yang 2013). The complete lack of *GULO* genes in all studied teleost fish genomes thus far is highly significant because they make up about 95% of all fish taxon (Yang et al. 2013). The key question from a grand evolutionary perspective is how did these genes completely disappear during macroevolution in teleost fishes and then reappear in other metazoan lineages later on? Another interesting anomaly is that the various genes that typically flank *GULO* in mammal and bird genomes are dispersed throughout the genomes in teleost fishes in variable taxonomically restricted patterns (Yang 2013). Despite their complete lack of a *GULO* gene, teleost fish successfully obtain their vitamin C requirements from their normal dietary intake in the wild.

The loss of vitamin C synthesis in various passerine birds is due to instances of taxonomically independent deletion mutations in the *GULO* gene (Drouin, Godin, and Page 2011). Because these *GULO* mutations in birds do not follow the inferred evolutionary pattern of bird evolution, they are said to be recent events in terminal lineages. However, at least 11 different passerine bird genera with intact functional *GULO* genes have postulated lineages supposedly derived from ancestors with broken *GULO* genes—contradicting the standard dogma for bird evolution (Drouin, Godin, and Page 2011).

The initial assessment of bats suggested they lacked the ability to synthesize vitamin C (Birney, Jenness, and Ayaz 1976). However, several recent studies have shown that approximately two thirds of different bat species have functionally expressed *GULO* genes (Cui et al. 2011a; Cui et al. 2011b). The various bat taxa that lack the ability to make vitamin C have varying levels of deletion degradation in their *GULO* genes and the patterns of sequence variation show that they are lineage independent events. Trying to explain the discontinuous *GULO* deletion patterns within a common descent paradigm has produced a variety of difficult contradictions for a coherent model of bat evolution (Cui et al. 2011b).

Loss of vitamin C pathway function and *GULO* gene degradation has also been detected in guinea pigs, great apes, and humans (Lachapelle and Drouin 2011; Nishikimi, Kawai, and Yagi 1992; Nishikimi et al. 1994; Ohta and Nishikimi 1999). In addition, naturally occurring scurvy and osteogenic disease pathologies related to *GULO* inactivating mutations and large-scale deletions have been documented in rats, mice, and pigs (Harris et al. 2005; Hasan et al. 2004; Jiao et al. 2005; Kawai et al. 1992; Mohan et al. 2005). Thus, degradation of the *GULO* gene in a wide array of mammals and birds is a relatively common occurrence.

The *GULO* gene lies within a gene-dense region in all vertebrate genomes studied thus far (Yang 2013). Related to this fact is the evolutionary anomaly that the gene neighborhood surrounding the *GULO* locus is rearranged across the vertebrate spectrum of life, and the patterns cannot be readily resolved into the standard inferred evolutionary lineages (Yang 2013). Another interesting discovery related to this issue is the fact that the genes surrounding *GULO* are each members of gene families with alleged copies located in other regions of the host genome, yet *GULO* is a unitary gene—not a member of a gene family (Yang 2013). In the standard evolutionary model of gene origins, the majority of new genes are believed to have arisen via the duplication of existing sequences, even though their individual functions may be completely different (Assis and Bachtrog 2013; Innan

and Kondrashov 2010). In regard to the *GULO* locus, the evolutionary mystery recently noted in a study by Yang (2013), is why the *GULO* gene was not also duplicated along with all of its genomic neighbors.

### Human *GULO* is Degenerate and Chromatin Repressed

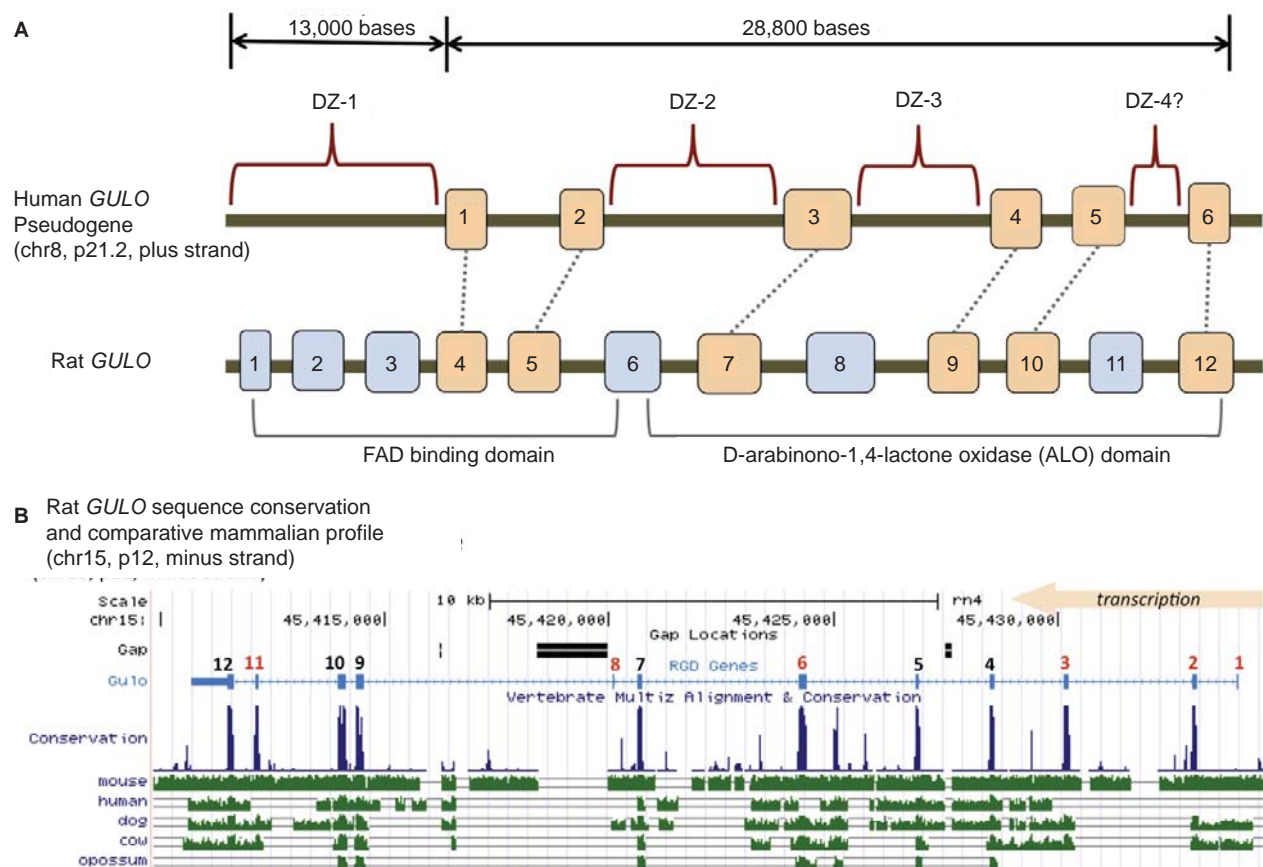
In humans, the *GULO* gene locus appears to be a broken gene suffering major deletions of key exons associated with a functional mammalian *GULO* gene (fig. 2A). Over the past 25+ years of messenger RNA sequencing from a large diversity of human tissues and cell lines, no *GULO* transcripts have been detected (Yang 2013). To confirm this status, all six exon sequences in the human *GULO* pseudogene obtained from the Ensembl database (ensembl.org), were queried against the current nucleotide and EST collections at NCBI and no hits for expressed human *GULO* sequences were obtained.

Traditionally, the human *GULO* pseudogene has been compared to the functional rat *GULO* gene (Nishikimi, Kawai, and Yagi 1992; Nishikimi et al. 1994; Ohta and Nishikimi 1999). According to the UCSC genome browser (genome.ucsc.edu) and the Rat Genome Database (rgd.mcw.edu), the rat *GULO* gene (chr15, region p12) is oriented and transcribed on the minus strand. Interestingly, the human and ape *GULO* pseudogenes are oriented in the plus strand configuration (chr8, region p21.2 in human). While the rat *GULO* gene may serve as a general guide to exon presence and absence in degraded *GULO* genes in other mammals, the rat *GULO* is clearly in a different chromosomal configuration (compared to humans and apes) and represents a unique design pattern specific to rodents (mouse *GULO* is on chr15, minus strand).

When the six human *GULO* exons were each individually blasted against the nucleotide database at NCBI, the top hit to a functional *GULO* gene for all six exons was always a mammalian species other than rat (Table 1). In addition, human exons 2 and 6, were only partially similar to rat, and overall only 24.9 and 20.2% similar (respectively) to their corresponding rat exons (Table 1). Thus, the comparative use of the rat *GULO* gene with human has obvious limitations.

Interestingly, it is an alleged single base insertion deletion in the rat *GULO* DNA sequence in exon ten (compared to humans and apes) that is used as the primary argument for inherited mistakes in human evolution. The errant nature of this evolutionary argument was previously addressed by Truman and Borger (2007) who questioned the validity of using the rat *GULO* gene as a standard for comparison. In fact, when comparing the complete 164 base sequence of human exon 5 that corresponds to





**Fig 2.** Structure of the human *GULO* pseudogene. (A) Comparison of the human *GULO* pseudogene region to the rat functional *GULO* sequence (adapted in part from data in Yang (2013) and the UCSC genome browser). Exon 1 of the rat *GULO* gene is missing in other non-rodent mammals. (B) Comparison of several vertebrate *GULO* gene tracks to the functional rat *GULO* sequence showing the highly conserved nature of the exons (data extracted from the UCSC genome browser).

rat exon 10, the overall similarity is only 83.5% (Table 1). Once again, given the marked sequence difference, the question of using rat as a definitive standard becomes questionable. Furthermore, the striking evolutionary discontinuity between humans and apes outside this alleged single base anomaly (based on the rat *GULO*) documented in this report (below) nullifies the simplistic grossly oversimplified evolutionary argument that this pseudogene supports macroevolution.

When the functional rat *GULO* gene is broadly compared across diverse metazoan taxon, the exon regions of the gene (except for rat exon 1), are generally well conserved (fig. 2B). Thus, it is reasonable to assume that the presence of similar *GULO* exon sequences in taxa with broken *GULO* genes and defunct vitamin C pathways, represent degenerate gene sequences. A consensus functional *GULO* gene in mammals encodes two basic functional protein domains as shown in fig. 2A (Yang 2013). The putative loss of key exon encoding segments from both these functional regions in the human *GULO* is also illustrated in fig. 2A.

**Table 1.** The DNA sequence identity for each human *GULO* exon compared to the top hit to a functional *GULO* sequence in the NCBI nucleotide database. The rat *GULO* identities for each exon are also shown. Identities include both insertions and deletions.

Human <i>GULO</i> exon	Length (bases)	Creature with Highest Functional Sequence Identity	Identity for prior col.	Rat <i>GULO</i> exon identity
1	101	Northern Greater Galago	87.4%	85.4%
2	96	Greater False Vampire Bat	68.1%	24.9%
3	107	Pratt's Roundleaf Bat	80.7%	71.6%
4	151	Chinese Tree Shrew	84.1%	79.5%
5	164	African Bush Elephant	87.5%	83.5%
6	129	White Rhinoceros	87.6%	20.2%

Human ENCODE information mined from the UCSC genome browser reveals the presence of epigenetic damage control systems in place to silence activity at the alleged degenerate *GULO* locus and insulate it from neighboring genes. Chromatin state mapping shows that the region is polycomb-repressed (discussed below) and transcriptionally inactive—corresponding with a complete absence of expressed human *GULO* transcripts. Low activity chromatin state signals, typically associated with heterochromatic regions of the genome, also characterizes the human *GULO* pseudogene. Also, flanking the *GULO* pseudogene are regions of chromatin state insulator demarcation that overlap binding sites for the CTCF protein. The multifunctional CTCF protein is implicated in diverse regulatory functions, which includes transcriptional activation and repression, chromatin insulation, genomic imprinting, and spatial organization in the genome (Kapranov and St Laurent 2012; Phillips and Corces 2009). Based on current three-dimensional models of how this concept works, the CTCF sites flanking the degenerate *GULO* locus would cause it to form a chromatin loop and position the *GULO* pseudogene region inside a transcriptionally repressive chromatin complex called a Polycomb Body—hence the region is polycomb-repressed (Li et al. 2013).

Of particular importance to inactivating any aberrant transcription or influence of intact regulatory elements within the broken *GULO* locus, is the fact that this repression must be heritable and maintained over numerous cell divisions. In accord with this requirement, the region must be epigenetically tagged with markers that read the pre-existing repressed chromatin state, such as the trimethylation of histone H3 at lysine 27, otherwise known as H3K27me3 marks (Pirrotta 2012; Yuan et al. 2012). Indeed, the human *GULO* pseudogene contains an extensive H3K27me3 histone profile across the entire 28,800 base region that would faithfully maintain and recruit the defunct damaged *GULO* region for polycomb repression over succeeding cell divisions. These H3K27me3 histone marks are not only required for the long-term multigenerational marking of repressed regions, but they also stabilize the binding of the DNA to the polycomb repressive complex (Li et al. 2013; Pirrotta 2012).

Based on current ENCODE data, the dynamic and fault tolerant machinery of the human genome has recognized and epigenetically silenced any intact regulatory features within the *GULO* locus in a manner that is faithfully reproduced and protects the expression of neighboring genes. If the *GULO* locus was not effectively silenced, it is possible that neighboring genes would be negatively affected based

on current models of chromatin functionality and gene regulation (Kapranov and St Laurent 2012; Van Bortle and Corces 2012). To the right (downstream) of the *GULO* locus is the *CLU* gene encoded on the minus strand, and to the left (upstream) is the *EPHX2* gene encoded on the plus strand. Both genes are functional and actively expressed in the human genome (data not shown). So the *GULO* locus is the only gene targeted for epigenetic silencing in an otherwise transcriptionally active region of the chromosome.

### Patterns of *GULO* Evolutionary Discontinuity In Humans and Apes

The *GULO* pseudogene has been promoted as supposed proof of human evolution from a common ancestor with apes. One recently popularized idea by Fairbanks claimed that, in regards to the broken *GULO* gene, “All primates have the same highly mutated fragment so the gene probably was disabled before different primate lineages diverged from their common ancestor” (Fairbanks 2010, p. 53). Fairbanks also claims that the human and chimpanzee version of the *GULO* pseudogene are 98% identical based on the blast results of a 565 base fragment from the gene, despite the fact that the entire *GULO* locus in humans, not counting the leading upstream sequence (~13,000 bases) associated with the apparent loss of several exons, is 28,800 bases long (fig. 2A). As we shall soon see, DNA similarity over the entire *GULO* region is markedly lower than Fairbanks biased estimate that used less than 2% of the total *GULO* pseudogene sequence.

Before discussing current research of the *GULO* gene region in humans, it is important to first note a recent research paper on this topic by two evolutionary scientists (Lachapelle and Drouin 2011). In this effort, the researchers attempted to ascertain the molecular basis for the apparent loss of five different exons in the human and ape *GULO* genes, compared to rodents. In particular, they analyzed the transposable element (TE) content of the various *GULO* gene regions since deletion-based inactivation of genes is largely associated with TEs and unequal recombination associated with their repeats (Teixeira-Silva et al. 2013; Uddin et al. 2006). Much to the researchers’ dismay, the overall TE content of mouse, rat, and guinea pig *GULO* genes varied widely and the TE content in humans and primates was not amenable to phylogenetic analyses due to its evolutionarily discordant nature. Despite the fact that TEs are apparently one of the main genomic drivers of deletion events in the genome, the researchers (Lachapelle and Drouin 2011) concluded that the lineage specific TE insertion patterns, which defied the standard inferred evolutionary model for

primates, did not contribute to the loss of exons in the *GULO* gene. Thus, their evolutionary presuppositions caused the rejection of otherwise strong genomic data that implicated TE related unequal recombination at the *GULO* locus (resulting in exon deletion) that occurred in taxonomically restricted events.

The conclusions by Lachapelle and Drouin (2011) based on evolutionary presuppositions were similar to an earlier, but less exhaustive study by Nishikimi's research group which showed that evolutionarily confusing patterns of TE fragments were present in exon-deletion areas of human and ape *GULO* pseudogenes (Inai, Ohta, and Nishikimi 2003; Nishikimi et al. 1994; Ohta and Nishikimi 1999). Clearly, the inactivated *GULO* gene and its TE content should be evaluated more closely in relation to the issue of human and primate origins, despite the lack of evolutionary common ancestry signatures.

### Comparative Analysis of the Human and Ape *GULO* Genes

The reports of high DNA similarity across the *GULO* gene region in human, compared to apes are primarily based on the comparison of selected exon sequences and not the entire sequence (let alone regulatory regions) (Fairbanks 2010; Kawai et al. 1992; Nishikimi et al. 1994; Ohta and Nishikimi 1999). It is the high level of sequence conservation in these select exonic regions across diverse vertebrate taxa that strongly suggest that the human *GULO* pseudogene exons are the signature of a once viable and important gene (fig 2B). Compared to the 11 conserved exons of the consensus mammalian *GULO* gene, humans and apes have allegedly lost exons 1, 2, 5, 7, and 10 (Yang 2013). This does not include exon 1 of the rat *GULO* which appears to be absent in other mammals.

The areas of putative exon deletion contain a wide variety of TEs and TE fragments (SINEs, LINEs, LTRs, and DNA elements). Many of these TE patterns are taxonomically restricted among humans, chimps, and gorillas in their presence and absence fragment signatures (fig 3A). I call these areas of interest "degenerate zones" or DZs (fig. 2A, fig. 3). There are four such areas corresponding to the putative loss of *GULO* exons. They are labeled DZ-1, DZ-2, DZ-3, and DZ-4 as shown in fig. 2. All degenerate zones except DZ-4, contain clear regions of genomic TE landscape differences that are taxonomically restricted, thus providing no discernible patterns supporting common ancestry of humans and apes. This is shown in fig. 3A and was noted previously in several evolutionary reports (Drouin, Godin, and Page 2011; Lachapelle and Drouin 2011).

When the complete sequences of all four degenerate zones are compared between humans,

chimps, gorillas, orangutans, rhesus macaque, and baboon, there are obvious taxonomically restricted gaps and deletion patterns that also provide a clear picture of discontinuity (fig. 3B).

What about the intact six *GULO* exons that are so highly conserved among vertebrates, several of which have been used as evidence of human-ape common ancestry? These human exon sequences actually vary widely in DNA sequence identity compared to five different ape taxa in the range of 74.8–100% (Table 2). However, when each group of human and ape exons is placed in similarity-ordered trees, the only set of sequences that produced the standard inferred phylogeny was for exon 5 (fig. 4A), which is the primary exon chosen by evolutionists as a target for comparative analyses (Nishikimi et al. 1994; Ohta and Nishikimi 1999; Truman and Berger 2007). The other exon sequences all produce markedly different trees that are decidedly taxonomically incongruent according to the inferred human-ape evolutionary tree. This pervasive evolutionarily discordant trend observed when constructing sequence-based trees, not only among humans and apes, but across the entire spectrum of eukaryotic life, is referred to as incomplete lineage sorting (Tomkins and Bergman 2013).

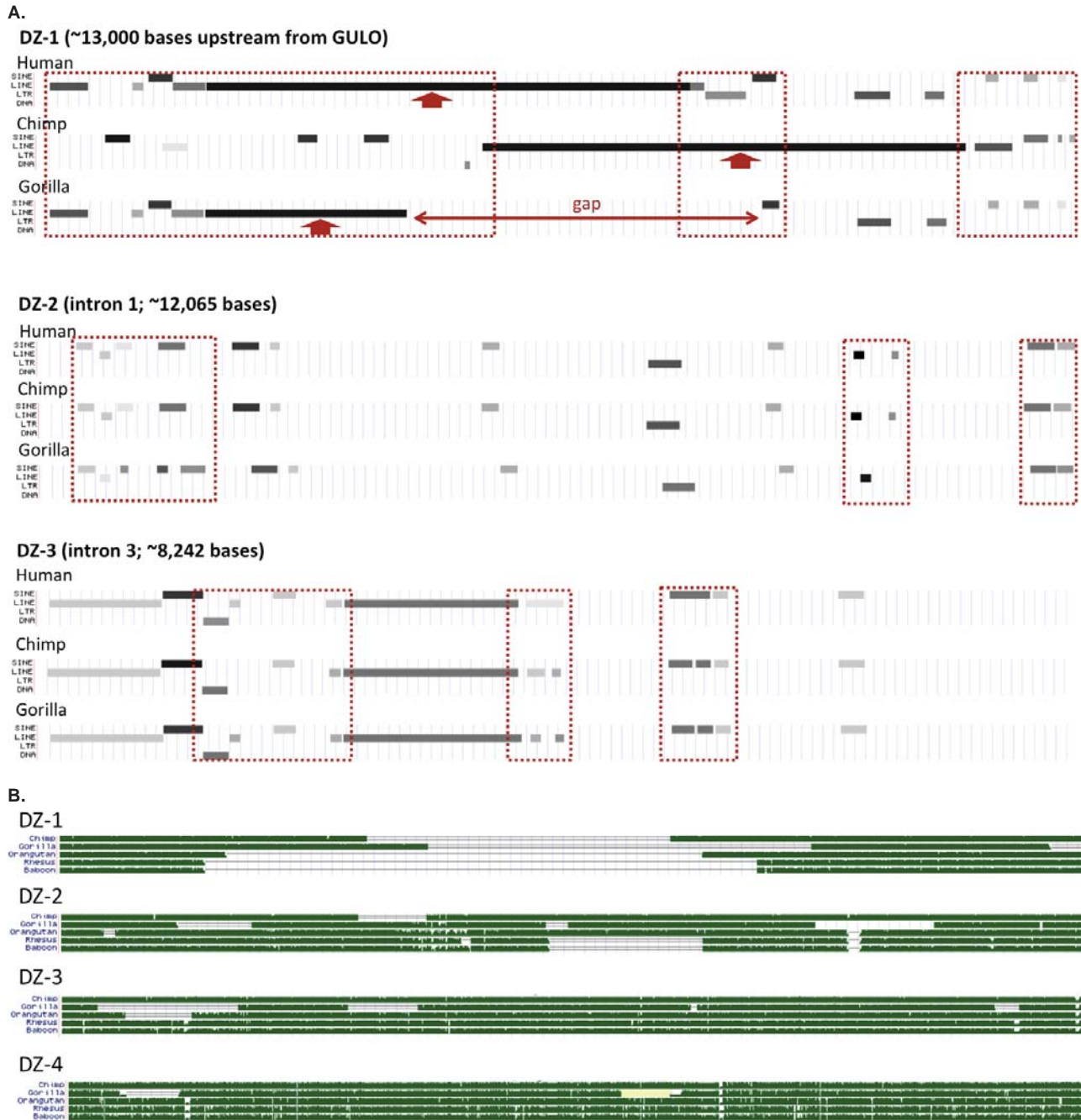
**Table 2.** The DNA sequence identity for each human *GULO* exon compared to five different ape taxon (DNA sequences extracted from the UCSC genome browser). Identities include insertions and deletions.

Human <i>GULO</i> exon	Length (bases)	Percent Sequence Identity Compared to Human				
		Chimp	Gorilla	Orangutan	Baboon	Rhesus
1	101	99.1	100	97.1	91.1	91.1
2	96	98.0	98.0	94.8	92.8	88.6
3	107	98.2	85.0	98.2	74.8	74.8
4	151	99.4	90.8	97.4	94.1	92.8
5	164	97.6	97.0	94.6	91.5	90.3
6	129	97.7	98.5	99.3	95.4	93.8

Adding to the story of evolutionary discontinuity among the exon sequence comparisons, is the fact that single nucleotide polymorphisms (SNPs) in the human *GULO* exons are minimal (fig. 4B). Two exons have zero SNPs and the others have only 1 to 4 SNPs. The majority of human *GULO* SNPs are in the intronic regions. Thus, the evolutionarily discordant exon-based phylogenetic trees cannot be blamed on excessive sequence variability in these regions associated with the standard neutral model of evolution.

Contrary to Fairbank's claims of 98% human-chimp *GULO* similarity based on the comparison of a very small highly similar DNA fragment of 564



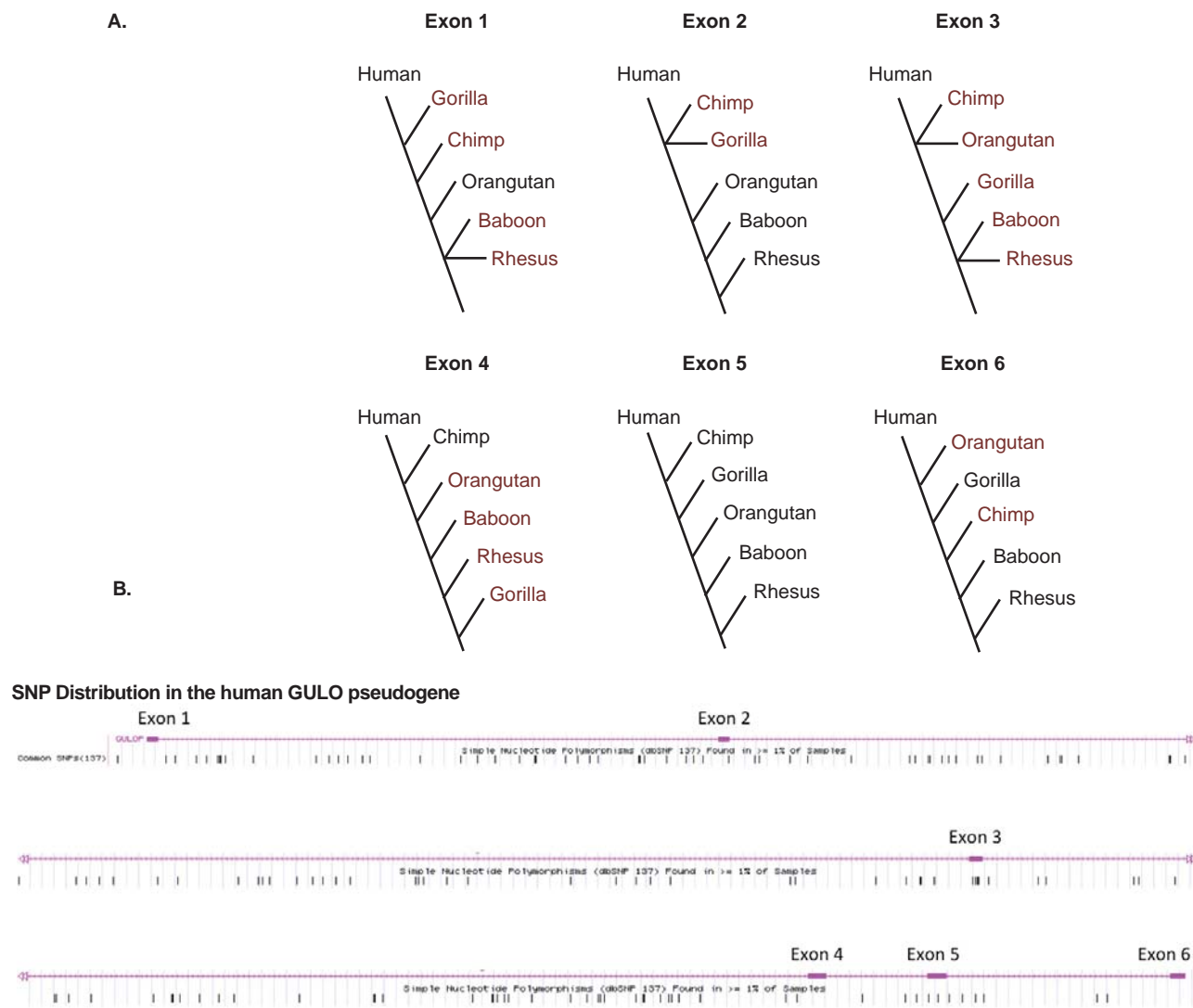


**Fig. 3.** Structure of the human *GULO* regions associated with putative exon loss demarcated as degenerate zones (DZs, see fig. 1). (A) Variable transposable element landscape of the first three degenerate zones for humans, chimps, and gorillas (DZ-4 showed no major differences). (B) Sequence homology tracks of five different ape taxon compared to each of the four human DZs in the *GULO* pseudogene. All data in this figure taken from the UCSC genome browser.

bases, the entire 28,800 base *GULO* region in human (hg19; chr8:27417791-27446590), which contains the putative remnants of six exons and five introns, is only 84% identical compared to chimpanzee using the previously established technique of optimized sequence slices and the BLASTN algorithm (Tomkins 2013b). Even more interesting is the comparison with gorilla using the same technique, which yielded 87% identity. These similarities are clearly outside the evolutionary paradigm and gorilla is more similar

to human in the *GULO* region than chimpanzee—negating the inferred order of phylogeny.

A region comprising 13,000 bases upstream of the 6-exon human *GULO* sequence was also analyzed for similarity to chimpanzee and gorilla. Hypothetically, this upstream segment would correspond to the loss of the first two consensus mammalian exons in the *GULO* gene and perhaps contain remaining fragments of the gene promoter (fig. 2). Compared to chimp and gorilla, this segment was only 68%



**Fig. 4.** (A) Simple DNA similarity trees for human and five ape taxon based on sequence identity of the six exons in the *GULO* pseudogene listed in Table 1. (B) Frequency of SNPs across the human *GULO* pseudogene (data from the UCSC genome browser).

and 73% identical, respectively. Once again, these similarities are clearly outside the evolutionary paradigm and gorilla is much more similar in this upstream region than chimpanzee—negating the inferred order of phylogeny.

The comparative transposable element landscape of the upstream 13,000 base region demarcated as degenerate zone 1 (DZ-1), is characterized by multiple TE fragment differences between humans, chimps, and gorillas (fig. 3A). In a broader comparison which includes rhesus and baboon, the degradation of DZ-1 is clearly taxonomically restricted and evolutionarily discontinuous (fig. 3B).

### Summary and Conclusions

One of the key arguments used by some proponents of evolutionary dogma is that the human and chimpanzee *GULO* pseudogenes are examples

of inherited shared genetic mistakes. However, as demonstrated in this report, overall evidence for common ancestry across the entire human *GULO* locus with chimps and other apes is completely negated by the following discoveries:

1. Compared to chimpanzee and gorilla, the 28,800 base *GULO* region in humans is only 84% and 87% identical to chimpanzee and gorilla, respectively.
2. The 13,000 bases upstream of the human *GULO* region corresponding to the putative area of loss for at least two major exons, is only 68% and 73% identical to chimpanzee and gorilla, respectively.
3. The individual six exon regions which are generally very similar among humans and various apes, each independently exhibit completely different and discordant phylogenetic patterns of similarity for all but one exon. A general lack of human SNPs in these exons indicates that incomplete lineage



sorting based on alleged ancestral polymorphisms is not a likely explanation.

4. The transposable element (TE) content for each region of putative exon loss is taxonomically restricted and evolutionarily discordant between humans and each ape taxon. Unequal recombination associated with transposable element repeats can lead to disruptive deletion events in the genome and likely did in these regions.

Many pseudogenes in the human genome are proving to be highly functional and key regulators of gene and genome function—producing important noncoding RNAs (Tomkins 2013a; Tomkins 2013c; Wen et al. 2012). However, there are other instances where pseudogenes likely represent broken genes that are tolerated by the organism, which would be expected under a model of genetic entropy (Sanford 2010). In the case of vitamin pathway genes across the spectrum of life, there are widespread documented instances where these seemingly unitary sequences have been broken and the lost vitamin is supplemented externally through diet or a host relationship (Helliwell, Wheeler, and Smith 2013).

However, the ability of an external source to supplement the biochemical loss of a vitamin should primarily be viewed as basic survival and a non-optimal situation involving toleration of the mutation event. In reality, the loss of a seemingly isolated gene sequence can have larger biochemical network effects and lower system optimization. In the study of mice who have had their entire *GULO* gene deleted from a naturally occurring mutation and are prone to spontaneous bone fractures (*sfx* mutants), at least 269 protein coding genes were found to be aberrantly regulated in diverse tissues even with vitamin C supplementation (Jiao et al. 2011). This is despite the fact that the mice appeared to grow normally and had no differences for internal organ weights, except for the spleen that weighed less than normal. Interestingly, a previous study had also detected the inability of vitamin C supplementation to negate certain physiological pathologies in *sfx* mutant mice (Lee et al. 2008). Clearly, adequate vitamin C intake can negate many problems associated with *GULO* loss, but the consequences may be less than optimal. Perhaps this mutation is in part, playing some role in the loss of human longevity as documented in the early chapters of Genesis in the Bible. Hypothetically, it could have occurred prior to the Genesis flood and then passed on as a pervasive trait in the genetic bottleneck in humans and various animals.

Another important aspect of consideration for the *GULO* gene degradation found in humans is the fact that it occurs frequently in mammals and birds, and

the events typically are associated with complete or partial loss of exons. This indicates that the gene may be predisposed to the effects of genetic entropy. At present, exon degradation and deletion events in the *GULO* gene have been documented in humans, apes, pigs, rats, mice, guinea pigs, bats, and passerine birds (Cui et al. 2011a; Cui et al. 2011b; Drouin, Godin, and Page 2011; Harris et al. 2005; Hasan et al. 2004; Jiao et al. 2005; Kawai et al. 1992; Lachapelle and Drouin 2011; Nishikimi, Kawai, and Yagi 1992; Yang 2013). Thus, contrary to popular opinion promoted by a variety of evolutionary propagandists, *GULO* gene dysfunction appears to be a wide-spread feature among not just humans, apes, and guinea pigs, but terrestrial animal life in general. But most importantly, patterns of *GULO* DNA sequence degradation are taxonomically restricted and do not support the macro-evolutionary model of origins.

While the exon deletion events in both humans and apes appear to involve the same exons, the transposable element signatures surrounding the events are clearly non-similar and taxonomically restricted as noticed in this report and several others (Drouin, Godin, and Page 2011; Lachapelle and Drouin 2011). The question then arises as why the same exons were apparently deleted, even though the deletion events are unique, not only between humans and apes, but also between each of the different ape taxon. First, it should be noted that we really don't know what the original genes looked like in their pristine created state or how similar they were between taxa. Second, there are several gaps in the ape *GULO* gene sequences and all ape genomes are still being assembled based on using the human genome as a framework (Prado-Martinez et al. 2013; Tomkins 2011). Thus, the ape genomes are biased to be more similar to human due to the way they are assembled and annotated.

Perhaps the anomaly that the same alleged exons were deleted is due to the fact that the transposable element features located in the intervening introns predisposed them to the effects of entropy. The *GULO* regions between human, chimpanzee, and gorilla do share similar genetic code—a common feature in engineered systems with similar function and it would be expected that the gene regions encoding common biochemical pathway enzymes would have a high level of similarity. Nevertheless, the apparent deletion signatures and remaining genetic landscapes are clearly not supportive of common ancestry. The same sort of *GULO* gene degradation has also been observed in many different passerine bird and bat taxon as well, and according to the opinion of this author, all represent different created kinds as do humans (created in the image of God) and the various types of ape taxons.

In 2007, Criswell proposed from a creationist perspective that the *GULO* pseudogene may serve some other functional purpose and not represent a degraded gene (Criswell 2007). However, he provided no analysis of the available human transcriptome data that was well developed and publicly available at the time to support this idea. He also stated that only four exons were in the human *GULO* gene, yet we now know that there at least six exons, and as documented in this report, closely match functional *GULO* exons in various animal taxa (Table 1). In addition, Criswell's hypothesis was proposed just prior to the first public release of data from the ENCODE project.

As demonstrated in this report, the *GULO* region is clearly chromatin repressed in a heritable fashion and not transcriptionally active. Based on the current state of genomic information presented in this report, the bulk of evidence indicates that the human *GULO* gene is pseudogenized via deletions occurring as a result of unequal recombination associated with transposable element repeats. These exon deletion events are taxonomically restricted in humans and in each of the different ape species tested. And in combination with an extreme lack of sequence similarity over the entire *GULO* locus, utterly negate the idea of macroevolutionary common ancestry.

## References

- Assis R., and D. Bachtrog. 2013. Neofunctionalization of young duplicate genes in *Drosophila*. *Proceedings of the National Academy of Sciences of the United States of America* 110, no. 43:17,409–17,414.
- Birney E. C., R. Jenness, and K.M. Ayaz. 1976. Inability of bats to synthesise L-ascorbic acid. *Nature* 260, no. 5552:626–628.
- Birney E. C., R. Jenness, and I.D. Hume. 1980. Evolution of an enzyme system: Ascorbic acid biosynthesis in monotremes and marsupials. *Evolution* 34, no. 2:230–239.
- Chatterjee, I.B. 1973. Evolution and the biosynthesis of ascorbic acid. *Science* 182, no. 4118:1271–1272.
- Chaudhuri, C.R. and I.B. Chatterjee. 1969. L-ascorbic acid synthesis in birds: phylogenetic trend. *Science* 164, no. 3878:435–436.
- Combs, G.F. Jr. 2008. *The vitamins: Fundamental aspects in nutrition and health*. San Diego, California: Elsevier.
- Criswell, D. 2007. Adam and Eve, vitamin C, and pseudogenes. *Acts & Facts* 36, no. 5. Dallas, Texas: Institute for Creation Research.
- Cui, J., Y.H. Pan, Y. Zhang, G. Jones, and S. Zhang. 2011a. Progressive pseudogenization: Vitamin C synthesis and its loss in bats. *Molecular Biology and Evolution* 28, no. 2:1025–1031.
- Cui J, X. Yuan, L. Wang, G. Jones, and S. Zhang. 2011b. Recent loss of vitamin C biosynthesis ability in bats. *PLoS One* 6, no. 11:e27114.
- Drouin, G., J.-R. Godin, and B. Page. 2011. The genetics of vitamin C loss in vertebrates. *Current Genomics* 12, no. 5:371–378.
- Fairbanks, D.J. 2010. *Relics of Eden: The powerful evidence of evolution in human DNA*. Amherst, New York: Prometheus Books.
- Fu, W., T.D. O'Connor, G. Jun, H.M. Kang, G. Abecasis, S.M. Leal, S. Gabriel, et al. 2013. Analysis of 6,515 exomes reveals the recent origin of most human protein-coding variants. *Nature* 493, no. 7431:216–220.
- Funk, C. 1912. The substance from yeast and certain foodstuffs which prevents polyneuritis (beri-beri). *British Medical Journal* II:787.
- Gropper, S.S., and J.L. Smith. 2012. *Advanced nutrition and human metabolism*. Stamford, Connecticut: Cengage Learning, .
- Hancock, R.D., J.R. Galpin, and R. Viola. 2000. Biosynthesis of L-ascorbic acid (vitamin C) by *Saccharomyces cerevisiae*. *FEMS Microbiology Letters* 186, no. 2:245–250.
- Harris, B.S., P.F. Ward-Bailey, L.R. Donahue, K.R. Johnson, R.T. Bronson, and M.T. Davisson. 2005. Spontaneous fracture 2 Jackson (sfx2J), a second mutation of the gulonolactone oxidase gene (*Gulo*). Retrieved from <http://www.informatics.jax.org/allele/MGI:3510598>.
- Hasan, L., P. Vögeli, P. Stoll, S.S. Kramer, G. Stranzinger, and S. Neuenschwander. 2004. Intragenic deletion in the gene encoding L-gulonolactone oxidase causes vitamin C deficiency in pigs. *Mammalian Genome* 15, no. 4:323–333.
- Helliwell, K.E., G.L. Wheeler, and A.G. Smith. 2013. Widespread decay of vitamin-related pathways: Coincidence or consequence? *Trends in Genetics* 29, no. 8:469–478.
- Inai Y., Y. Ohta Y., and M. Nishikimi. 2003. The whole structure of the human nonfunctional L-gulono-gamma-lactone oxidase gene—the gene responsible for scurvy—and the evolution of repetitive sequences thereon. *Journal of Nutritional Science and Vitaminology* 49, no. 5:315–319.
- Innan, H., and F. Kondrashov. 2010. The evolution of gene duplications: Classifying and distinguishing between models. *Nature Reviews Genetics* 11, no. 2:97–108.
- Jiao, Y., X. Li, W.G. Beamer, J. Yan, Y. Tong, D. Goldowitz, B. Roe, and W. Gu. 2005. A deletion causing spontaneous fracture identified from a candidate region of mouse Chromosome 14. *Mammalian Genome* 16, no. 1:20–31.
- Jiao, Y., J. Zhang, J. Yan, J. Stuart, G. Gibson, L. Lu, R. Willaims, and Y.J. Wang. 2011. Differential gene expression between wild-type and *Gulo*-deficient mice supplied with vitamin C. *Genetics and Molecular Biology* 34, no. 3:386–395.
- Kapranov, P., and G. St Laurent. 2012. Dark matter RNA: Existence, function, and controversy. *Frontiers in Genetics* 3:60.
- Kawai, T., M. Nishikimi, T. Ozawa, and K. Yagi. 1992. A missense mutation of L-gulono-gamma-lactone oxidase causes the inability of scurvy-prone osteogenic disorder rats to synthesize L-ascorbic acid. *Journal of Biological Chemistry* 267, no. 30:21,973–21,976.
- Lachapelle, M.Y., and G. Drouin. 2011. Inactivation dates of the human and guinea pig vitamin C genes. *Genetica* 139, no. 2:199–207.
- Lee, C.W., X.D. Wang, K.L. Chien, Z. Ge, B.H. Rickman, A.B. Rogers, A. Varro, M.T. Whary, T.C. Wang, and J.C. Fox. 2008. Vitamin C supplementation does not protect L-gulono-gamma-lactone oxidase-deficient mice from *Helicobacter pylori*-induced gastritis and gastric premalignancy. *International Journal of Cancer* 122, no. 5:1068–1076.

- Li, H.B., K. Ohno, H. Gui, and V. Pirrotta. 2013. Insulators target active genes to transcription factories and polycomb-repressed genes to polycomb bodies. *PLoS Genetics* 9, no. 4:e1003436.
- Linster, C.L., T.A. Gomez, K.C. Christensen, L.N. Adler, B.D. Young, C. Brenner, and S.G. Clarke. 2007. Arabidopsis VTC2 encodes a GDP-L-galactose phosphorylase, the last unknown enzyme in the Smirnov-Wheeler pathway to ascorbic acid in plants. *Journal of Biological Chemistry* 282, no. 26:18,879–18,885.
- Linster, C.L., and E. Van Schaftingen. 2007. Vitamin C. Biosynthesis, recycling and degradation in mammals. *FEBS Journal* 274, no. 1:1–22.
- Martinez del Rio, C. 1997. Can passerines synthesize vitamin C? *The Auk* 114, no. 3:513–516.
- Mohan, S., A. Kapoor, A. Singgih, Z. Zhang, T. Taylor, H. Yu, R.B. Chadwick, et al. 2005. Spontaneous fractures in the mouse mutant *sfx* are caused by deletion of the gulonolactone oxidase gene, causing vitamin C deficiency. *Journal of Bone and Mineral Research* 20, no. 9:1597–1610.
- Nishikimi, M., R. Fukuyama, S. Minoshima, N. Shimizu, and K. Yagi. 1994. Cloning and chromosomal mapping of the human nonfunctional gene for L-gulono-gamma-lactone oxidase, the enzyme for L-ascorbic acid biosynthesis missing in man. *Journal of Biological Chemistry* 269, no. 18:13,685–13,688.
- Nishikimi, M., T. Kawai, and K. Yagi. 1992. Guinea pigs possess a highly mutated gene for L-gulono-gamma-lactone oxidase, the key enzyme for L-ascorbic acid biosynthesis missing in this species. *Journal of Biological Chemistry* 267, no. 30:21,967–21,972.
- Nowak, G., C.A. Carter, and R.G. Schnellmann. 2000. Ascorbic acid promotes recovery of cellular functions following toxicant-induced injury. *Toxicology and Applied Pharmacology* 167, no. 1:37–45.
- Ohta, Y., and M. Nishikimi. 1999. Random nucleotide substitutions in primate nonfunctional gene for L-gulono-gamma-lactone oxidase, the missing enzyme in L-ascorbic acid biosynthesis. *Biochimica et Biophysica Acta* 1472, no. 1–2:408–411.
- Padh, H. 1990. Cellular functions of ascorbic acid. *Biochemistry and Cell Biology* 68, no. 10:1166–1173.
- Phillips, J.E., and V.G. Corces. 2009. CTCF: Master weaver of the genome. *Cell* 137, no. 7:1194–1211.
- Pirrotta, V. 2012. Molecular biology. How to read the chromatin past. *Science* 337, no. 6097:919–920.
- Pohanka, M., J. Pejchal, S. Snopkova, K. Havlickova, J.Z. Karasova, P. Bostik, and J. Pikula. 2012. Ascorbic acid: An old player with a broad impact on body physiology including oxidative stress suppression and immunomodulation: A review. *Mini Reviews in Medicinal Chemistry* 12, no. 1: 35–43.
- Prado-Martinez, J., P.H. Sudmant, J.M. Kidd, H. Li, J.L. Kelley, B. Lorente-Galdos, K.R. Veeramah, et al. 2013. Great ape genetic diversity and population history. *Nature* 499, no. 7459:471–475.
- Roy, R.N., and B.C. Guha. 1958. Species difference in regard to the biosynthesis of ascorbic acid. *Nature* 182, no. 4631: 319–320.
- Sanford, J.C. 2010. *Genetic entropy and the mystery of the genome*. Waterloo, New York: FMS Publications.
- Smirnov, N. 2001. L-ascorbic acid biosynthesis. *Vitamins and Hormones* 61:241–266.
- Teixeira-Silva, A., R.M. Silva, J. Carneiro, A. Amorim, and L. Azevedo. 2013. The role of recombination in the origin and evolution of *Alu* subfamilies. *PLoS One* 8, no. 6:e64884.
- Tennessen, J.A., A.W. Bigham, T.D. O'Connor, W. Fu, E.E. Kenny, S. Gravel, S. McGee, et al. 2012. Evolution and functional impact of rare coding variation from deep sequencing of human exomes. *Science* 337, no. 6090:64–69.
- Tomkins, J.P. 2011. How genomes are sequenced and why it matters: Implications for studies in comparative genomics of humans and chimpanzees. *Answers Research Journal* 4:81–88. Retrieved from <http://www.answersingenesis.org/articles/arj/v4/n1/implications-for-comparative-genomics>.
- Tomkins, J.P. 2013a. Alleged human chromosome 2 “fusion site” encodes an active DNA binding domain inside a complex and highly expressed gene—negating fusion. *Answers Research Journal* 6:367–375. Retrieved from <http://www.answersingenesis.org/articles/arj/v6/n1/human-chromosome-fusion>.
- Tomkins, J.P. 2013b. Comprehensive analysis of chimpanzee and human chromosomes reveals average DNA similarity of 70%. *Answers Research Journal* 6:63–69. Retrieved from <http://www.answersingenesis.org/articles/arj/v6/n1/human-chimp-chromosome>.
- Tomkins, J.P. 2013c. The human beta-globin pseudogene is non-variable and functional. *Answers Research Journal* 6:293–301. Retrieved from <http://www.answersingenesis.org/articles/arj/v6/n1/human-beta-globin-pseudogenes>.
- Tomkins, J., and J. Bergman. 2013. Incomplete lineage sorting and other ‘rogue’ data fell the tree of life. *Journal of Creation* 27, no. 3:84–92.
- Truman, R., and P. Borger. 2007. Why the shared mutations in the Hominidae exon X *GULO* pseudogene are not evidence for common descent. *Journal of Creation* 21, no. 3:118–127.
- Uddin, R.K., Y. Zhang, V.M. Siu, Y.-S. Fan, R.L. O'Reilly, J. Rao, and S.M. Singh. 2006. Breakpoint associated with a novel 2.3Mb deletion in the VCFS region of 22q11 and the role of *Alu* (SINE) in recurring microdeletions. *BMC Medical Genetics* 7:18.
- Van Bortle, K., and V.G. Corces. 2012. Nuclear organization and genome function. *Annual Review of Cell and Developmental Biology* 28:163–187.
- Wen, Y.Z., L.L. Zheng, L.H. Qu, F.J. Ayala, and Z.R. Lun. 2012. Pseudogenes are not pseudo any more. *RNA Biology* 9, no. 1:27–32.
- Wong, S.Z.H., B. Ching, Y.R. Chng, W.P. Wong, S.F. Chew, and Y.K. Ip. 2013. Ascorbic acid biosynthesis and brackish water acclimation in the Euryhaline Freshwater White-Rimmed Stingray, *Himantura signifer*. *PLoS One* 8, no. 6:e66691.
- Yang, H. 2013. Conserved or lost: Molecular evolution of the key gene *GULO* in vertebrate vitamin C biosynthesis. *Biochemical Genetics* 51, no. 5–6:413–425.
- Yang, L., M. Zou, B. Fu, and S. He. 2013. Genome-wide identification, characterization, and expression analysis of lineage-specific genes within zebrafish. *BMC Genomics* 14:65.
- Yuan, W., T. Wu, H. Fu, C. Dai, H. Wu, N. Liu, X. Li, et al. 2012. Dense chromatin activates Polycomb repressive complex 2 to regulate H3 lysine 27 methylation. *Science* 337, no. 6097:971–975.



