

MINISTRY OPPORTUNITIES

END-OF-YEAR 2025



CONTINUING TO MAKE AN ETERNAL IMPACT

Answers in Genesis impacts tens of millions of people annually, directly and indirectly, through its attractions (Ark Encounter and Creation Museum), VBS and Bible curriculum, apologetics resources, media (*Answers* magazine, Answers TV), outreach speaking events, radio programs, and social media. In fact, in 2024 alone, our YouTube videos had over 47 million views from 1.25 million subscribers. In our 32nd year of ministry, Answers in Genesis continues to expand and reach more people with the truth of God's Word and the gospel. The growing Ark Encounter and Creation Museum attractions have hosted nearly 15 million guests since they opened.

The following pages provide brief summaries of key ministry outreaches/projects that we pray will be funded through our 2025 end-of-year giving campaign. These opportunities further support AiG's overall goal of reaching, engaging, and impacting people with the gospel and equipping them to defend God's Word.



CONTENTS

Gospel Impact at the Attractions	4
Summary of Ministry Opportunities	10
2025 END-OF-YEAR CAMPAIGN	12
Ark Encounter Expansion	14
Creation Museum Expansion	20



GOSPEL IMPACT AT THE ATTRACTIONS

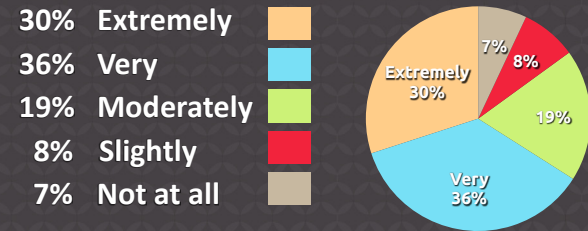


2024
40 Days & 40 Nights
Christian Music Festival
2,476 saved in 40 days

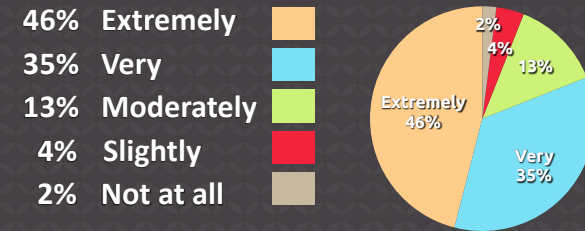


ARK ENCOUNTER GUEST SURVEYS

Did your visit to the **ARK ENCOUNTER** strengthen and better equip you to defend your faith?

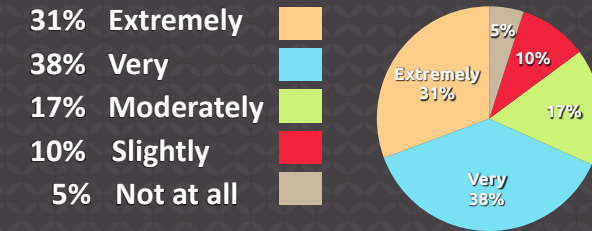


Do you believe the **ARK ENCOUNTER** is impactful to guests and shares how they can become a Christian?



CREATION MUSEUM GUEST SURVEYS

Did your visit to the **CREATION MUSEUM** strengthen and better equip you to defend your faith?



Do you believe the **CREATION MUSEUM** is impactful to guests and shares how they can become a Christian?



Did you or anyone in your group make a new decision to put your faith and trust in Jesus Christ for forgiveness of your sins?



If extrapolated to the 1 million+ **Ark** guests, this would be **70,000 saved annually!**

Did you or anyone in your group make a new decision to put your faith and trust in Jesus Christ for forgiveness of your sins?



If extrapolated to the 500K+ **Museum** guests, this would be **25,000 saved annually!**



SUMMARY OF MINISTRY OPPORTUNITIES

Below is a financial summary of the ministry outreaches/projects that are detailed on the following pages.

We are grateful for your prayerful consideration to support these ministry opportunities.

Every dollar you give to our end-of-year campaign to help fund these impactful ministry projects will be matched 100%—up to \$10 million through the end of 2025. Please partner with us to reach more people with the truth of God’s Word and the gospel!

End-of-Year Campaign	
Ark Encounter Expansion including addition of IAA’s Megiddo Mosaic and Second Temple Period exhibits	\$15,500,000
Creation Museum Expansion	\$4,500,000
TOTAL 2025 EOY CAMPAIGN	\$20,000,000



 **Answers**
IN GENESIS®  **ARK**
ENCOUNTER®  **CREATION**
MUSEUM®

2025 END-OF-YEAR CAMPAIGN



ARK ENCOUNTER EXPANSION



ARK ENCOUNTER EXPANSION

These expansion initiatives are to impact and bring more guests to the evangelistic Ark Encounter. These include the addition of two major exhibits and expansion/infrastructure activities in preparation for future, family-friendly attractions at the Ark catering to younger audiences. The two new major exhibits will include artifacts on loan from the Israel Antiquities Authority.

MEGIDDO MOSAIC

This first exhibit will feature the Megiddo Mosaic, dated to approximately AD 250, the oldest archaeological find, apart from written manuscripts, showing that early Christians believed Jesus is God. This highly popular exhibit will undoubtedly draw additional guests to the Ark Encounter to see this incredible piece of evidence for biblical history. The mosaic will be displayed in the Ark Encounter's Answers Center, along with other biblical artifacts. The exhibit will also include life-size figures based on some of the people whose names are listed on the mosaic, similar to the figures in our popular Borderland exhibit at the Creation Museum. This new exhibit can also be used to promote the forthcoming Jerusalem model.





ISRAEL ANTIQUITIES AUTHORITY ARTIFACT ROOM

The second exhibit will feature a display of over 100 artifacts dated to Israel's Second Temple period (approximately 516 BC – AD 70) from the Israel Antiquity Authority (IAA). These will be displayed in the Artifacts Room of the coming first-century Jerusalem model attraction adjacent to Ark's Welcome Center. These artifacts will provide further context to the model and give guests an opportunity to see items made and used in Israel during the time the model depicts. This funding will provide for the loan of the artifacts from the IAA and the finishing of the Artifacts Room (currently is unfinished).

FORECAST BUDGET - ARK ENCOUNTER EXPANSIONS

TOTAL	\$15,500,000
-------	--------------

CREATION
MUSEUM®

CREATION MUSEUM EXPANSION



CREATION
MUSEUM®

CREATION MUSEUM EXPANSION

The next phase in the development of the gospel-proclaiming Creation Museum expands and opens primary gathering areas in preparation for our future Children's Interactive Experience. This expansion will ease congestion and prepare the museum for a new engaging, interactive area for children, and their parents, where they will be able to touch and interact with certain exhibits in a way that enhances their understanding of science and the gospel.

REPURPOSING OF FORMER DINING AREA/NOAH'S CAFÉ

With the construction of the new larger dining facility underway, the current dining area at the Creation Museum, Noah's Café, will be repurposed to expand the main hall and relocate the coffee/ice cream venue. This will greatly reduce congestion in the front of the museum and also provide a direct entrance to the future planned Children's Interactive Experience in what was formerly the AiG main office space.



CREATION
MUSEUM®

DRAGON HALL BOOKSTORE UPDATE

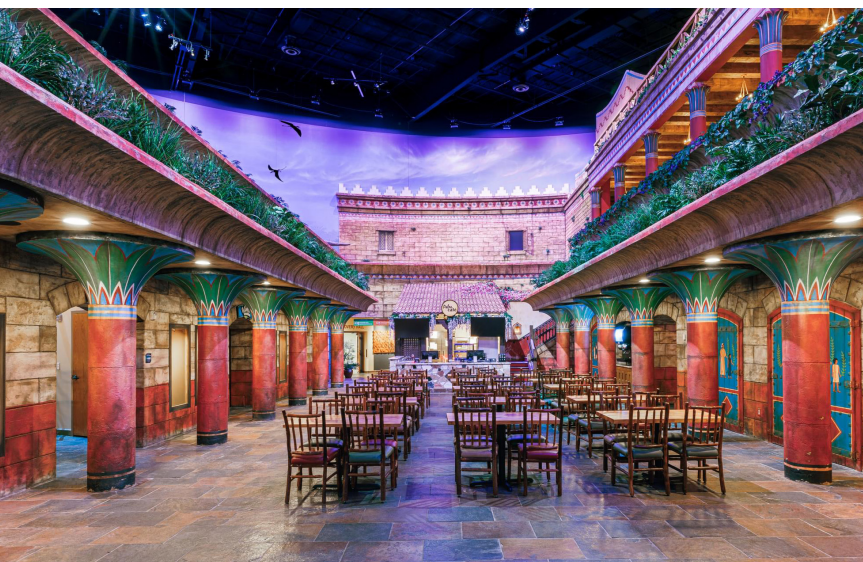
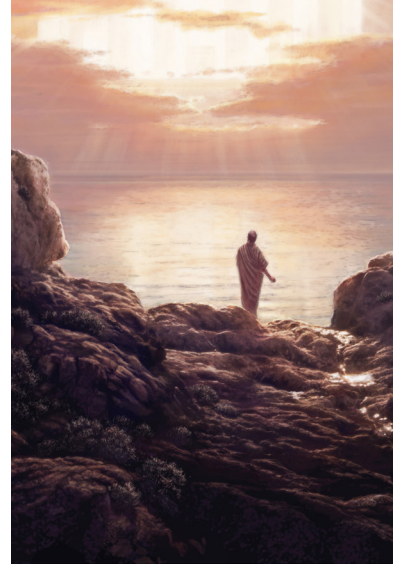
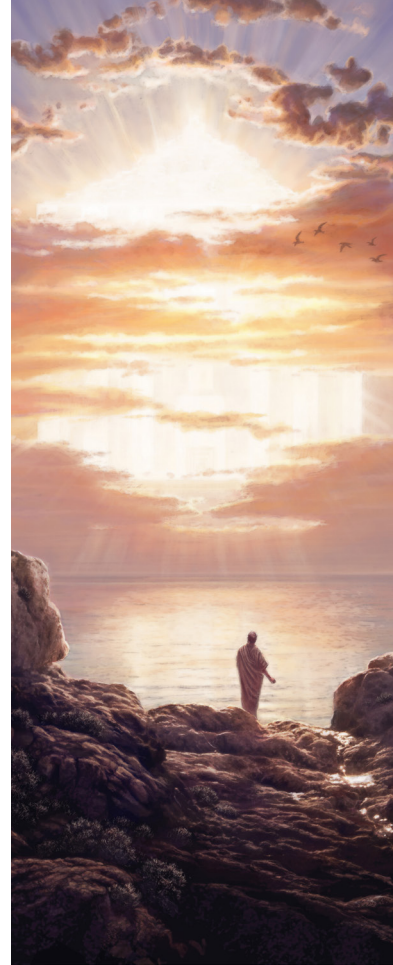
The Dragon Hall Bookstore at the Creation Museum will be updated to a more open floorplan. This will help alleviate congestion in the museum lobby and make the bookstore easier to navigate. Removing this choke point provides space for easier queuing to special attractions like the Planetarium and the popular 4D Special Effects Theater.

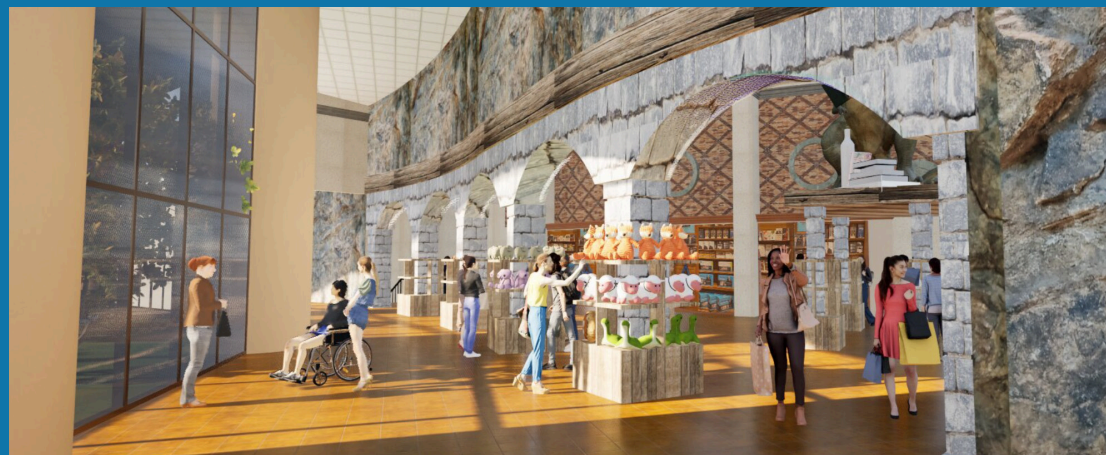
CHILDREN'S INTERACTIVE EXPERIENCE DESIGN & DEVELOPMENT

The Creation Museum expansion funding will provide for the research, design and plan development of the future Children's Interactive Experience into AiG former office space at the museum. This planned interactive area will encourage children, and their parents, to use their hands as they explore scientific topics and interact with God's creation. This experience will allow the Creation Museum to present the gospel to children in a more immersive way than we ever have before.

FORECAST BUDGET

TOTAL	\$4,500,000
-------	-------------





ARK
ENCOUNTER®

1:1
Answers
IN GENESIS®

CREATION
MUSEUM®