

Introduction to Life Science

UNIT
1

NAME _____



GOD'S
DESIGN®

Lessons 1-4

Plants
for Beginners

Lesson 1

Is It Alive?

If you had a gummy worm and an earthworm in front of you, how could you tell which one is alive?

A gummy worm cannot eat. An earthworm eats dead plants in the soil.

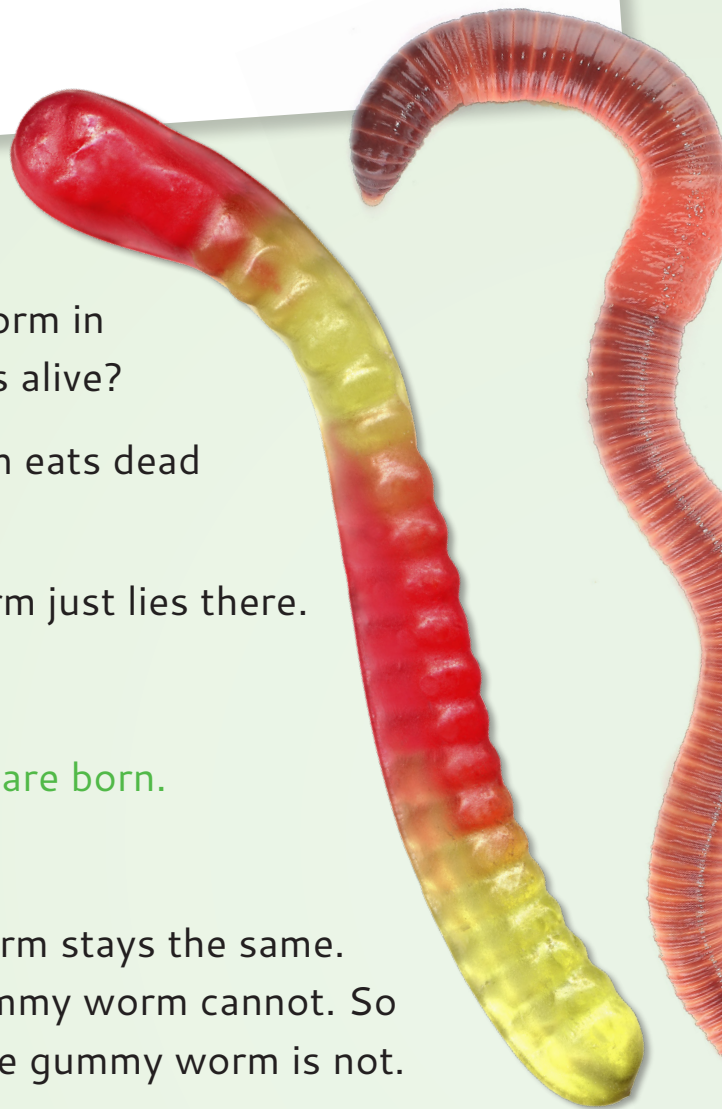
The earthworm wriggles. The gummy worm just lies there.

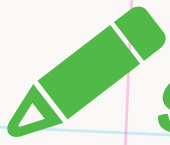
Living things are born.
They grow and eventually die.

The earthworm can grow. The gummy worm stays the same. The earthworm can have babies. But the gummy worm cannot. So you know that the earthworm is alive and the gummy worm is not.

Animals are alive. Plants are alive, too. And of course people are alive. They can all do the things that the earthworm can do.

- ? How can you tell if something is a living thing?
- ? Is a cat alive? Is a couch alive?
- ? Is God alive?





Scripture Trace

May the glory of the LORD endure forever; may the LORD rejoice in his works.
Psalm 104:31



Outdoor Scavenger Hunt

Go outside and collect lots of things, some that are alive and some that are not. Then fill in the chart below.


Living

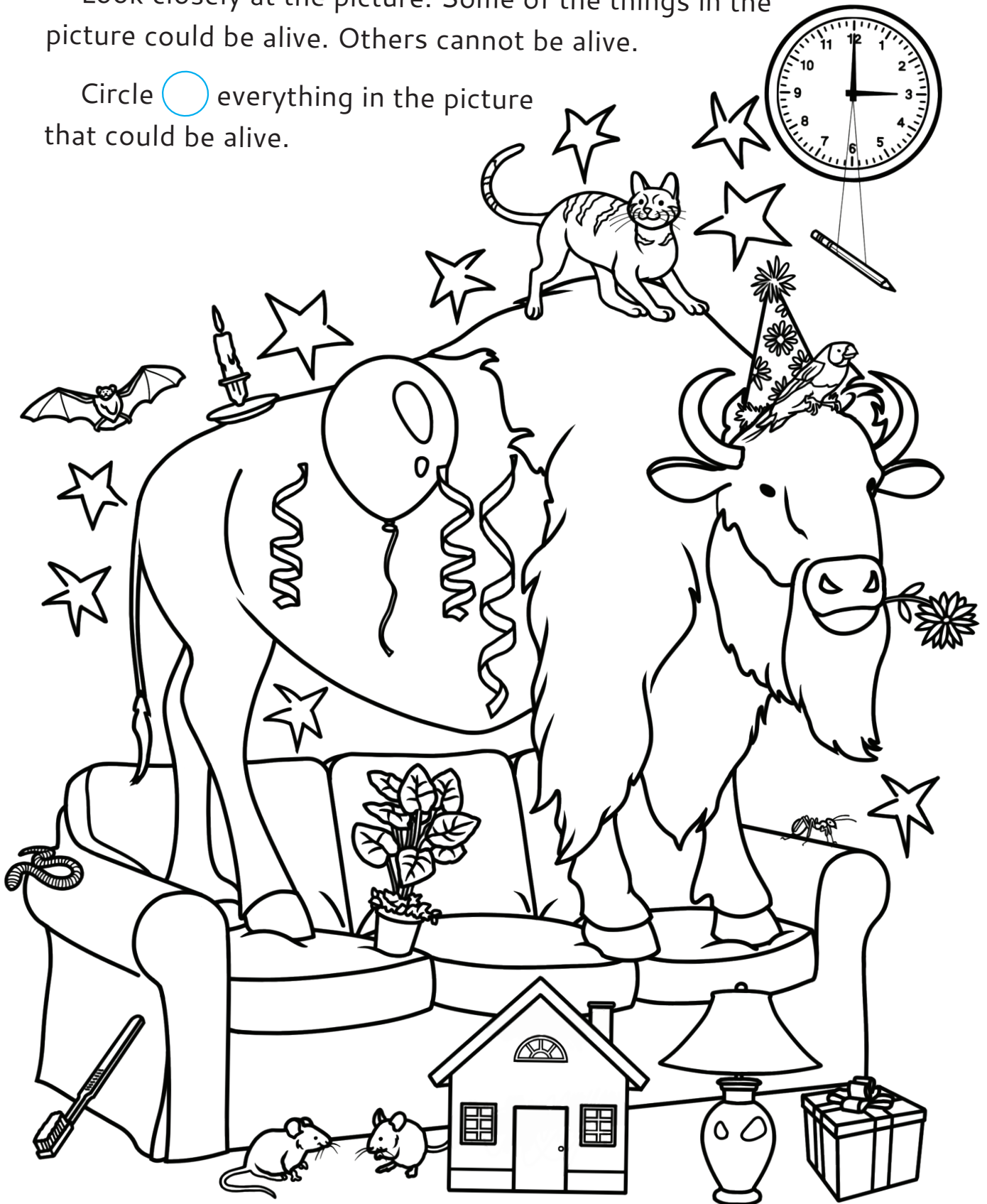
Nonliving



Is It Alive Scavenger Hunt

Look closely at the picture. Some of the things in the picture could be alive. Others cannot be alive.

Circle  everything in the picture that could be alive.



Plant or Animal

Lesson 2

Plants and animals are both alive, but plants and animals are different.

Plants

have green leaves. They are planted in the ground. Plants must have sunlight to grow. Plants use sunlight to make their food.

Animals

do not have to be planted in the ground. Animals can live in places without sunlight.

Bats live in caves. There is no sunlight in a cave. But animals cannot make their own food. Animals have to eat plants or other food.

Animals can move around. Plants can turn their leaves to face the sun. But the whole plant cannot get up and walk around.



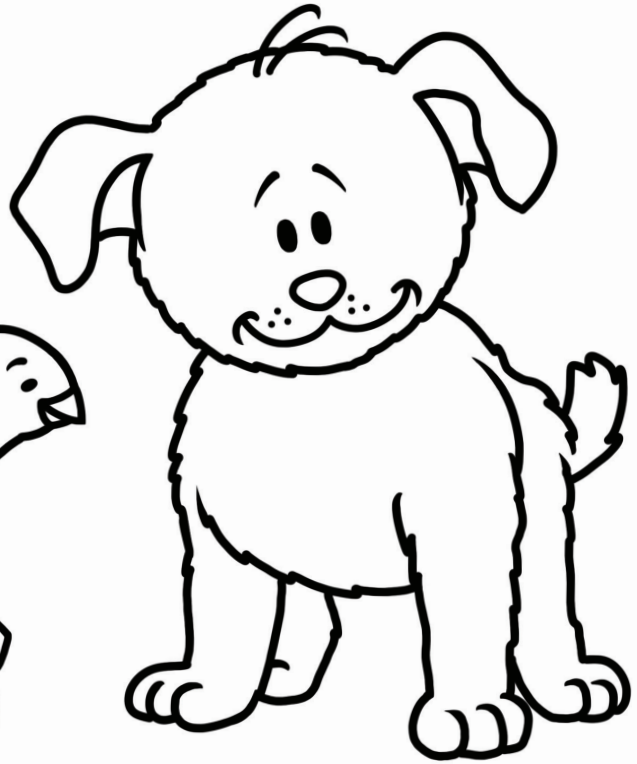
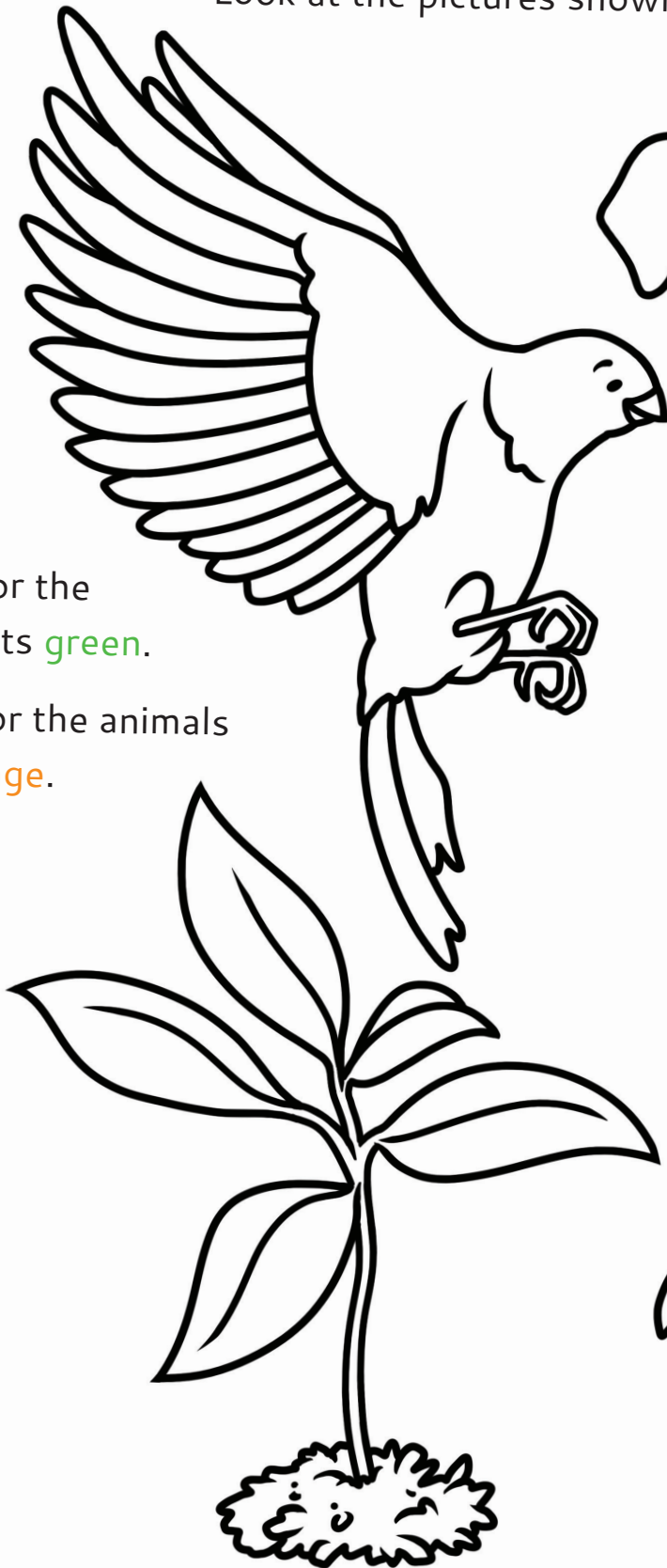


Plant or Animal Worksheet

Look at the pictures shown here.

Color the
plants **green**.

Color the animals
orange.



- ? What do plants need in order to make their food?
- ? Can plants move like people?
- ? Name one important difference between plants and animals.



On What Day Were They Created?

Draw a line from the day of creation to the correct thing made on that day. See Genesis 1 in the Bible for help.

Day 3

Day 5

Day 6



Lesson 3

Classifying Plants and Animals

Classification

is putting things into groups based on features they have in common.

Adam would have used a classification method by grouping animal kinds together when he named them.

Scientists classify living things based on similar features. They group things into categories. The biggest category is the Kingdom. All living things fit into just five or six kingdoms. The smallest category is species.

All plants are not alike so scientists put them into different groups. One group is trees.

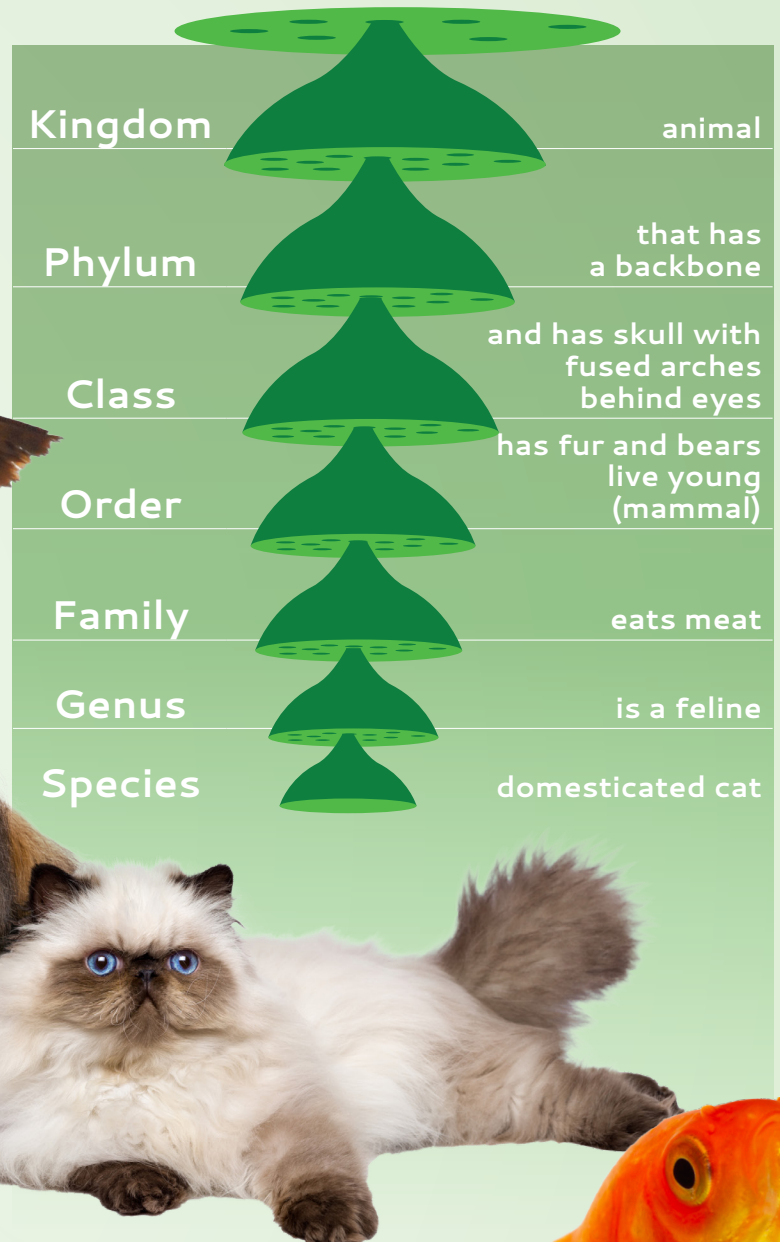
Most trees have tall trunks. Trees have branches. And trees have lots of leaves.

Other plants have beautiful flowers. These plants are much smaller than trees.

Grass is a plant, too. But grass does not have big colorful flowers. These



How Scientists Classify Living Things



different plants are in different groups.

All animals are not alike.

Some animals have fur. Dogs, cats, and rabbits all have fur.



Birds have feathers. Birds fly through the air. An eagle is a bird. So is a blue jay.

Fish are animals that live in the water. Fish have scales instead of fur.



What Am I?

Look at the plants and animals shown here.

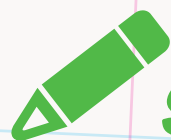
Circle  the trees. Draw a triangle  around the flowers.

Draw a square  around the animals with fur (mammals).

Put an **X** on the animals with feathers (birds).







Scripture Trace

Now out of the ground the LORD God had formed every beast of the field and every bird of the heavens and brought them to the man to see what he would call them.

Genesis 2:19

? How are dogs and cats alike?

? How are dogs and birds different?

? Who was the first human to classify, or name, the animals?



Classify Your Closet!

Try your hand at being a scientist, and classify your closet. Grouping your clothes together based on color may make it easier for you to put together a matching outfit or find your favorite shirt for that special day. You can group clothes based on color, short or long sleeves, pants or shorts, etc. When you decide how to organize your clothes, you get to be the scientist and make your own groups!

Plant and Animal Cells

Lesson 4

Every plant and animal is made up of millions of tiny cells.

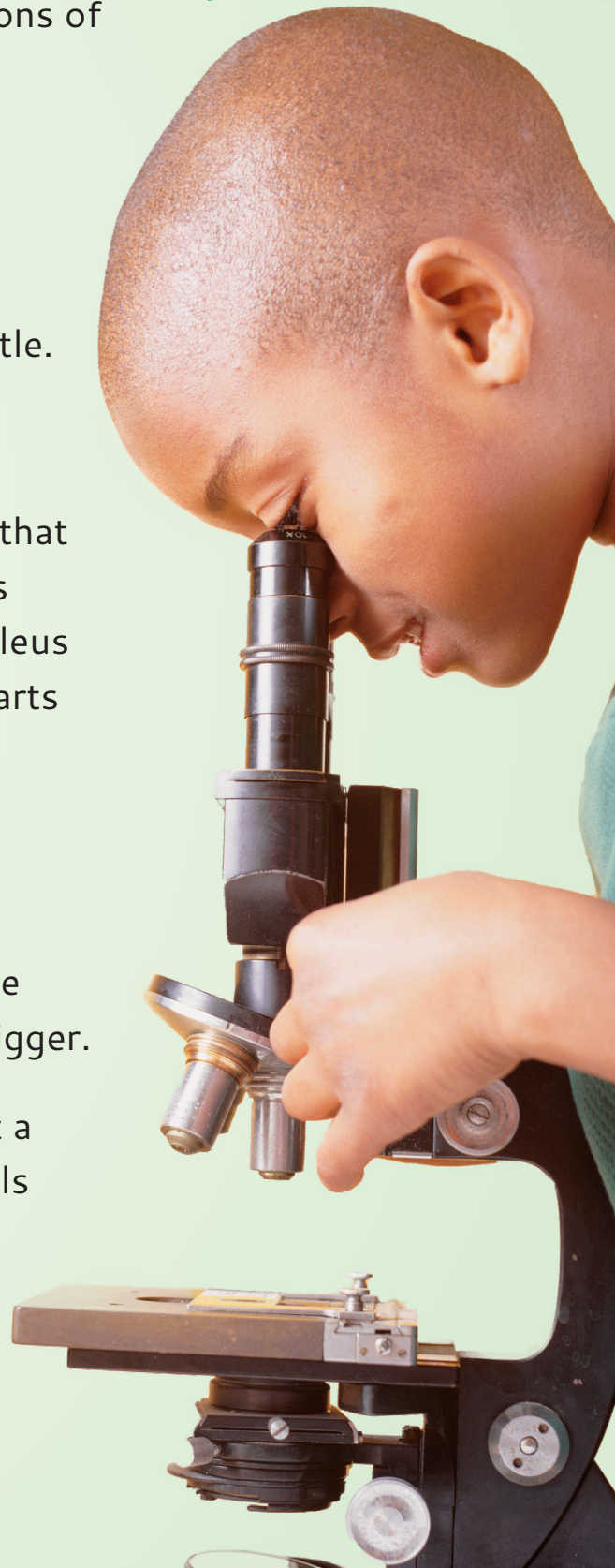
A cell is like a building block. When you put blocks together you can make something. You might make a tower or a castle. When cells grow together they make plants and animals.

Cells are very tiny. A cell is like a tiny bag that is filled with a special liquid. This liquid helps other parts of the cell move around. The nucleus is the brain of the cell. It tells all the other parts what to do.

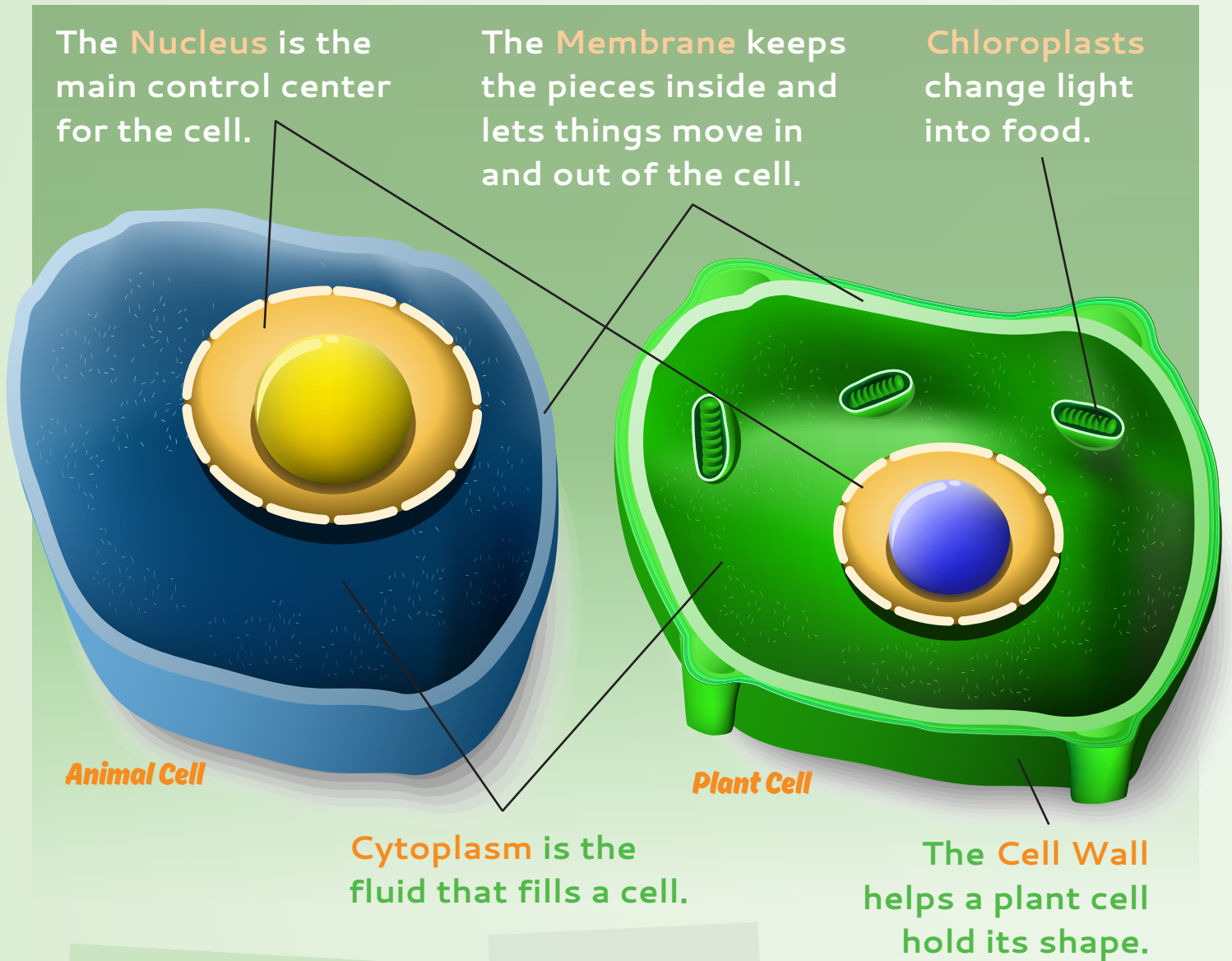
You need a special machine called a

microscope to see cells. A microscope makes tiny things look bigger.

When we use a microscope we can see what a cell looks like. We see that most animal's cells are round. Most plant cells are shaped like a square or rectangle.



Plant cells also have special parts that change sunlight into food. You can look at the pictures of plant and animal cells to see where all these parts are inside the cell.



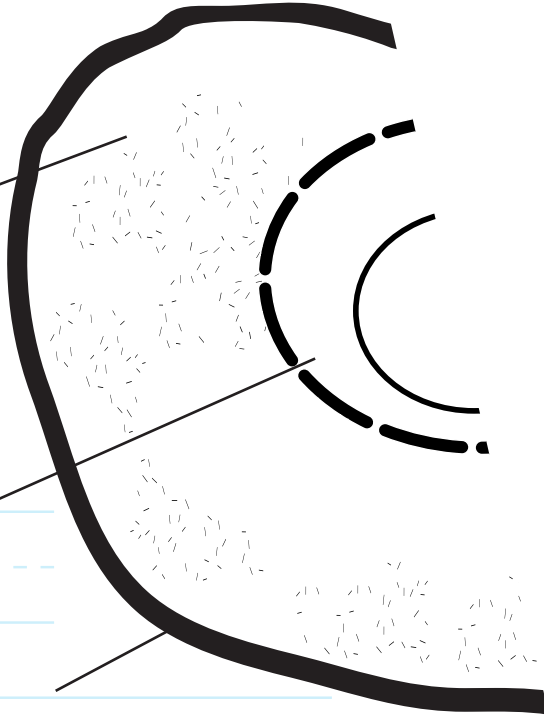
- ? What shape are most animal cells?
- ? What shape are most plant cells?
- ? Can you name the parts of an animal cell? What about a plant cell?
- ? What is the special machine called that helps us see tiny things?

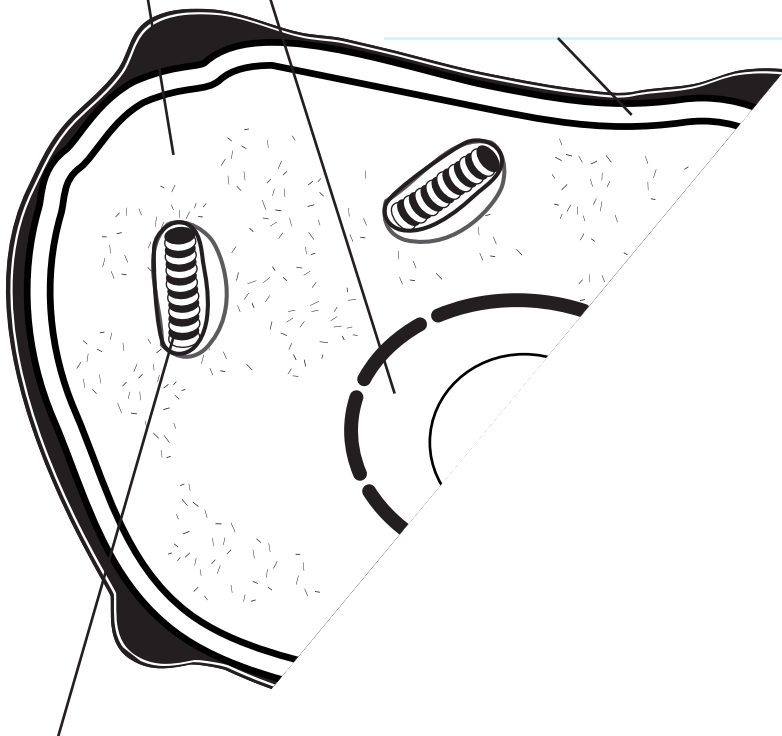


Plant and Animal Cells

Complete the cells then label and color them.

cell





cell



Unit Vocabulary Review

Find the words and answer the questions below.

ANIMALS

CELL

CLASSIFICATION

LIVING THINGS

MICROSCOPE

PLANTS



Copy the four orange letters in the found words to reveal a secret word.

Which word means putting things in groups by things they have in common?

What is the word for something that has leaves?
