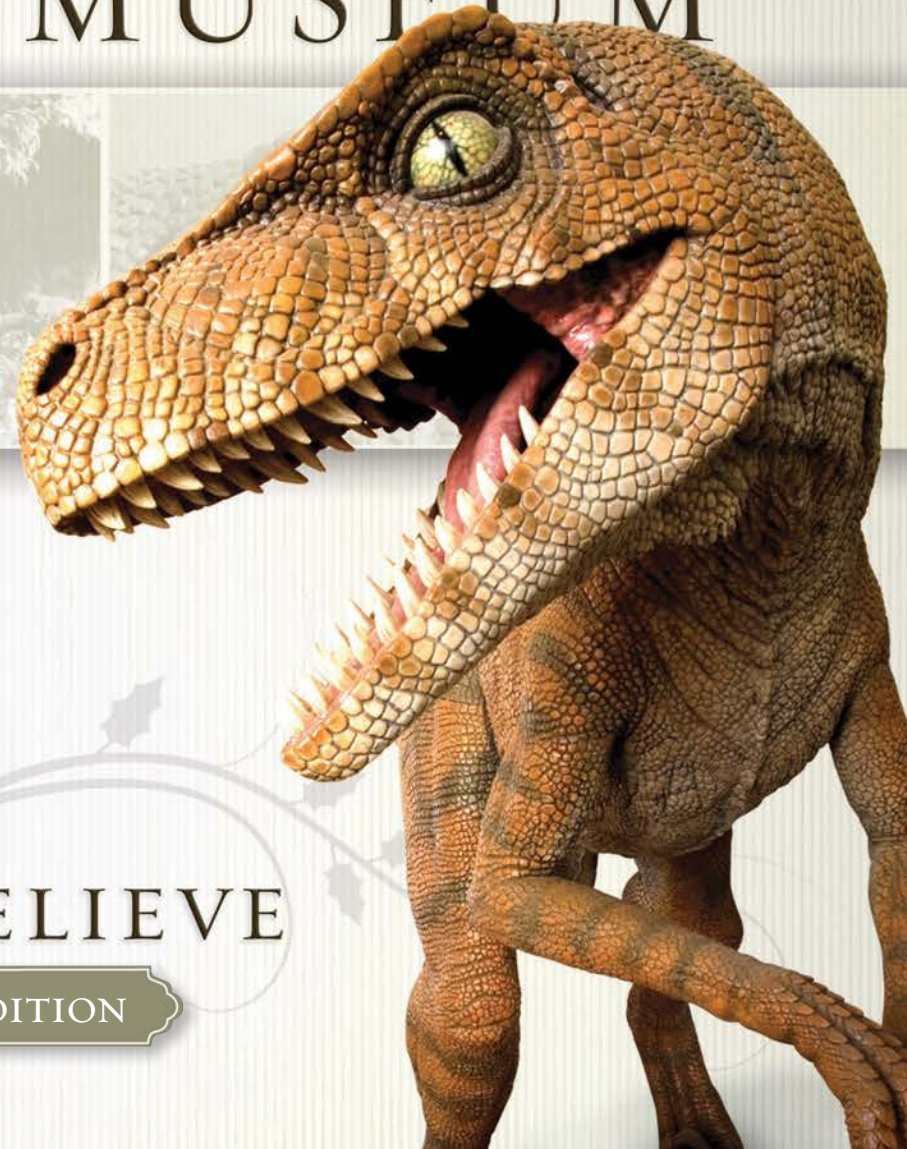
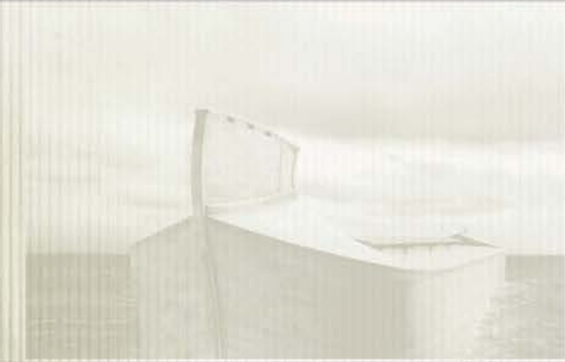


JOURNEY THROUGH *the* CREATION MUSEUM



PREPARE TO BELIEVE

REVISED & EXPANDED EDITION

First printing: September 2008
Second printing, Revised & Expanded Edition: April 2016

Copyright © 2008 by Answers in Genesis. All rights reserved. No part of this book may be used or reproduced in any manner whatsoever without written permission of the publisher except in the case of brief quotations in articles and reviews. For information write to:

Master Books®, P.O. Box 726, Green Forest, AR 72638
Master Books® is a division of the New Leaf Publishing Group, Inc.

ISBN-13: 978-0-89051-530-3

Library of Congress Number: 2008935150

All scripture quotations are taken from the
New King James Version

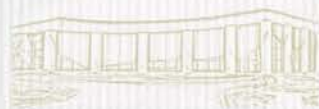
Cover design by Left Coast Design, Inc.
Interior design by Diana Bogardus & Rebekah Krall

Printed in China.

Please visit our web site for other great titles:
www.masterbooks.com

For information regarding author interviews, please contact the
publicity department at (870) 438-5288





JOURNEY THROUGH *the* CREATION MUSEUM

PREPARE TO BELIEVE



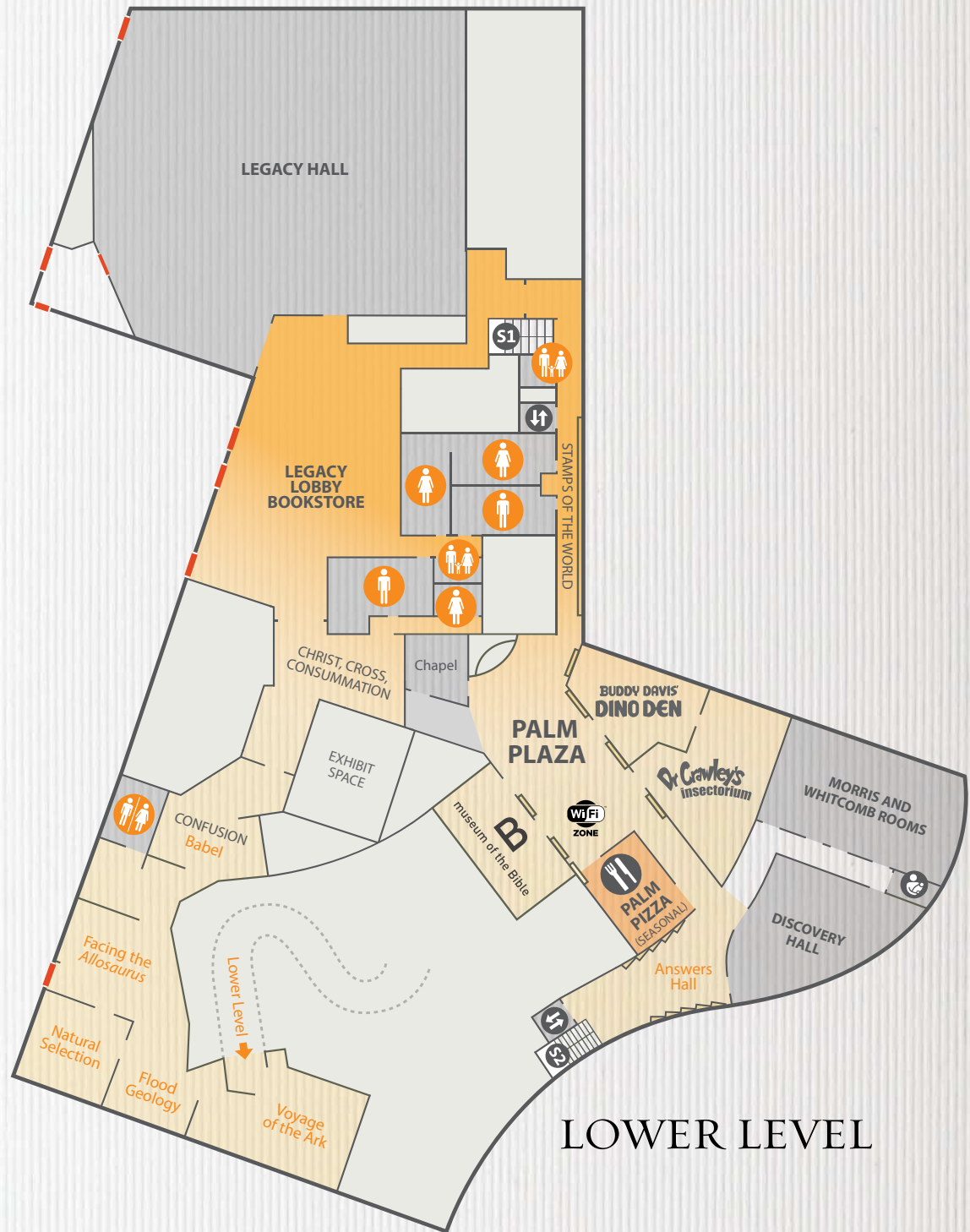
As people visit the Answers in Genesis (AiG) Creation Museum, I am overwhelmed by the positive responses I often hear many say, "This way exceeded our expectations." People say how grateful and thankful they are that such a God-honoring place so boldly standing on the authority of God's Word, defending the Christian faith and proclaiming the gospel exists in this very secularized culture.

However, this is not just AiG's Museum — it is your museum. God's people from every walk of life and all ages contributed to this place either financially, through prayer, volunteer help or in a myriad of other ways.

What happened here at the Creation Museum is a "God thing." We often said it was a "God-sized project." It is a miracle of existence. AiG certainly organized the construction and exhibit design, but this place is for everyone. It is for you to use so that Christians will be equipped and non-Christians challenged concerning the truth of God's Word, and the gospel of Jesus Christ.

As you look through these pages, please don't marvel at what people have been able to build, but marvel at what God has accomplished through His dedicated people.

— Ken Ham



LOWER LEVEL



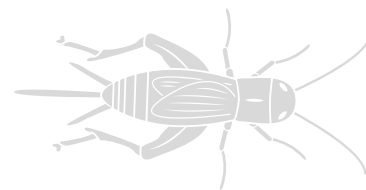
TABLE OF CONTENTS

INTRODUCTION	6
THE 7 C'S	10
MAIN HALL	12
STARGAZERS ROOM	18
MEN IN WHITE	24
DIG SITE	26
STARTING POINTS	30
LUCY	34
BIBLICAL AUTHORITY	36
CULTURE IN CRISIS	40
SIX DAYS THEATER	42
WONDERS ROOM	44
CREATION	48
CORRUPTION	54
CATASTROPHE	60
FLOOD GEOLOGY ROOM	66
ALLOSAURUS	70
CONFUSION	73
CHRIST	76
THE LAST ADAM	76
CROSS	79
CONSUMMATION	79
PALM PLAZA	80
DR. CRAWLEY INSECTORIUM	82
BIBLE EXHIBIT	84
DINOSAUR DEN	86
DRAGON HALL BOOKSTORE	92
NOAH'S CAFE	94
NATURE TRAILS	96
ZIP LINE	102
PETTING ZOO	104
CHRISTMAS TOWN	110





DR. CRAWLEY'S INSECTORIUM





Dr. Crawley's Insectorium is one of the many newer exhibits that keep the Creation Museum fresh and exciting. As people enter the exhibit, they are transferred into a world of staggering beauty, stunning acrobatic feats, ceaseless variety, and spectacular weirdness. The collection represents a lifetime of collecting by Dr. Crawley, who began his interest in these creatures during a merit badge project as a kid. Wherever his travels took him, he would venture out and add to his collection. This world-class collection rivals the quality seen at the Smithsonian, is interactive and fun, and was largely funded by our "Membership with a Mission" program. This program gives members the opportunity to see first-hand how their support goes directly toward the development of new exhibits and features.

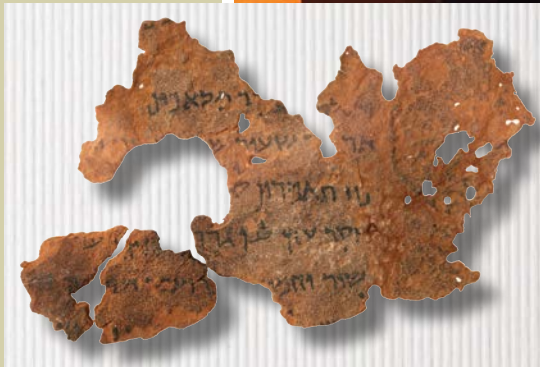




MUSEUM OF THE BIBLE



Palm Plaza also includes a room devoted to the history of the Bible. Featuring rotating exhibits on loan from the Museum of the Bible, guests are treated to ancient manuscripts, beautifully illustrated Bibles, clay tablets, and many other items that are a part of the Green Collection. You will read stories of brave men and women who have fought to preserve God's Word, see original copies of priceless texts, and learn about how the Bible was translated and passed down through the centuries.





BUDDY DAVIS' DINOSAUR DEN

Biblical history is the key to understanding dinosaurs!

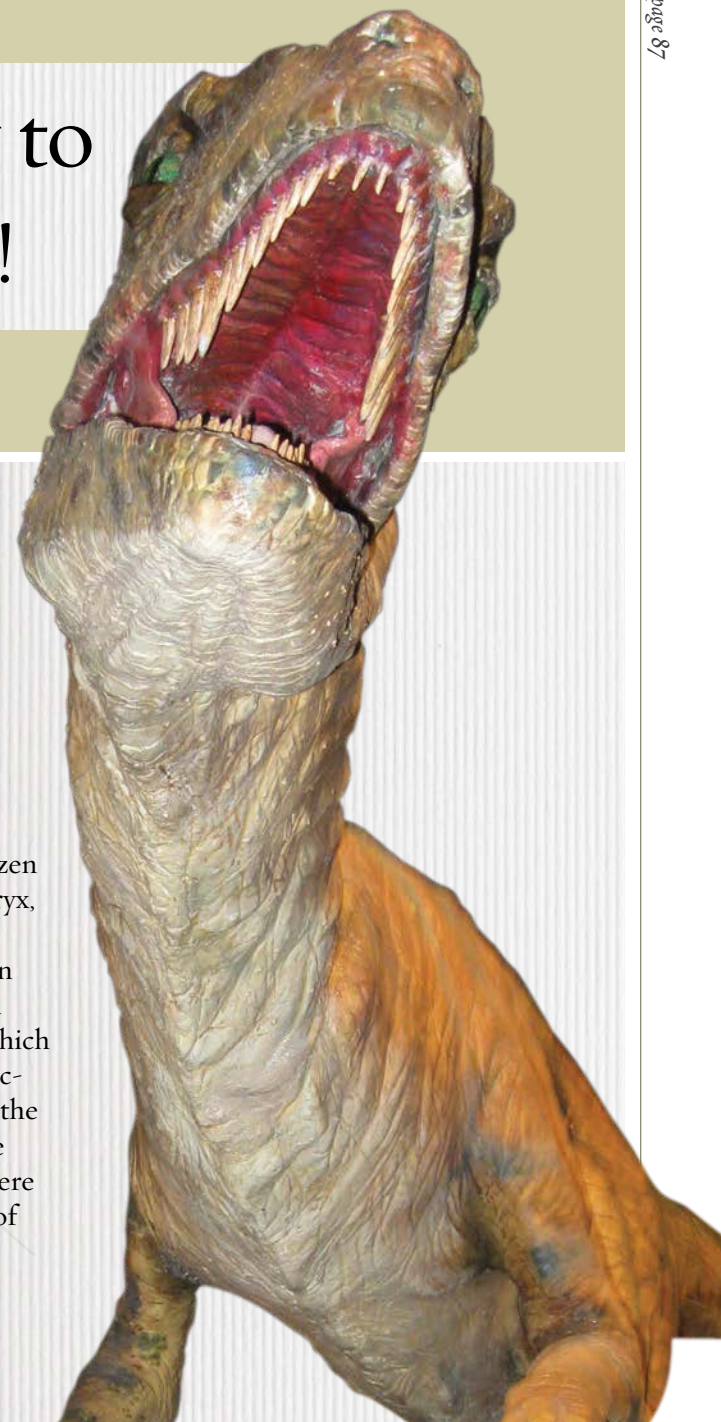
DINOSAUR EXHIBIT

An arched doorway leads into a two-story, life-sized dinosaur exhibit. Signs take guests chronologically through a biblical explanation of dinosaurs, and the dinosaur models are guaranteed to fascinate everyone! From dinosaur eggs, to the skeleton of a triceratops, to the massive *T. rex* looming large above visitors, it's a great area for a family photo and an important perspective on seeing dinosaurs not as products of millions of years, but as part of a created world only thousands of years old.



DINOSAURS GALORE

Dinosaur Den is home to over a dozen different dinosaurs, an Archaeopteryx, and several flying reptiles sculpted by our own Buddy Davis. Guests can stand next to a Triceratops skeleton and examine various fossils, all of which are explained from a biblical perspective. There are over 29 dinosaurs in the Creation Museum, five of which are animatronic. Some estimate that there may have been as many as 55 kinds of dinosaurs represented on the ark during the global flood.



Visitors can stand face to face with some of God's most amazing creations. Popular dinosaurs and unique creatures are hallmarks of this world class exhibit.

CHASMOSAURUS



ARCHAEOPTERYX



PROTOCERATOPS





ANUROGNATHUS



TRICERATOPS

“Look now at the behemoth, which I made along with you; He eats grass like an ox. See now, his strength is in his hips, And his power is in his stomach muscles. He moves his tail like a cedar; The sinews of his thighs are tightly knit. His bones are like beams of bronze, His ribs like bars of iron.”

— JOB 40:15-18

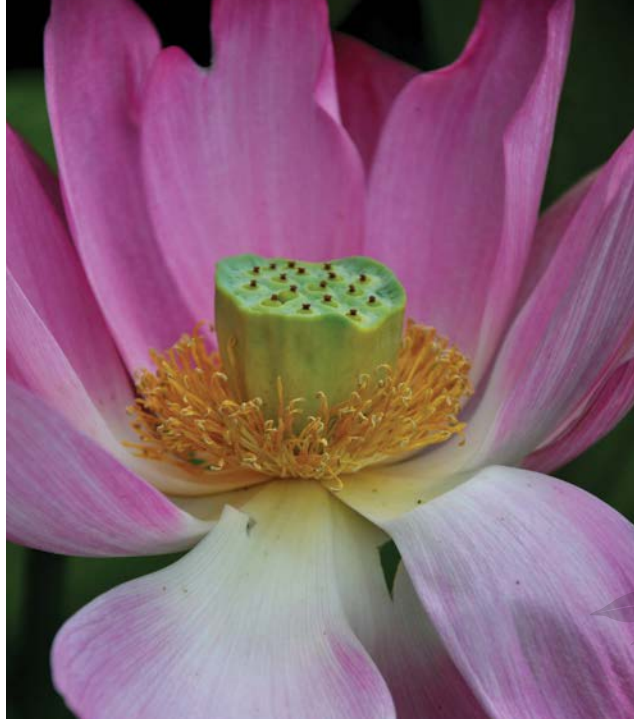
CERATOSAURUS





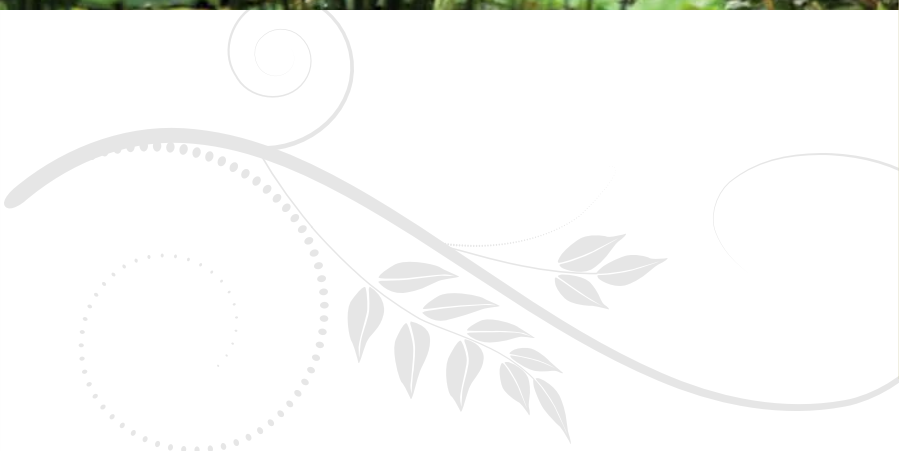
NATURE TRAILS

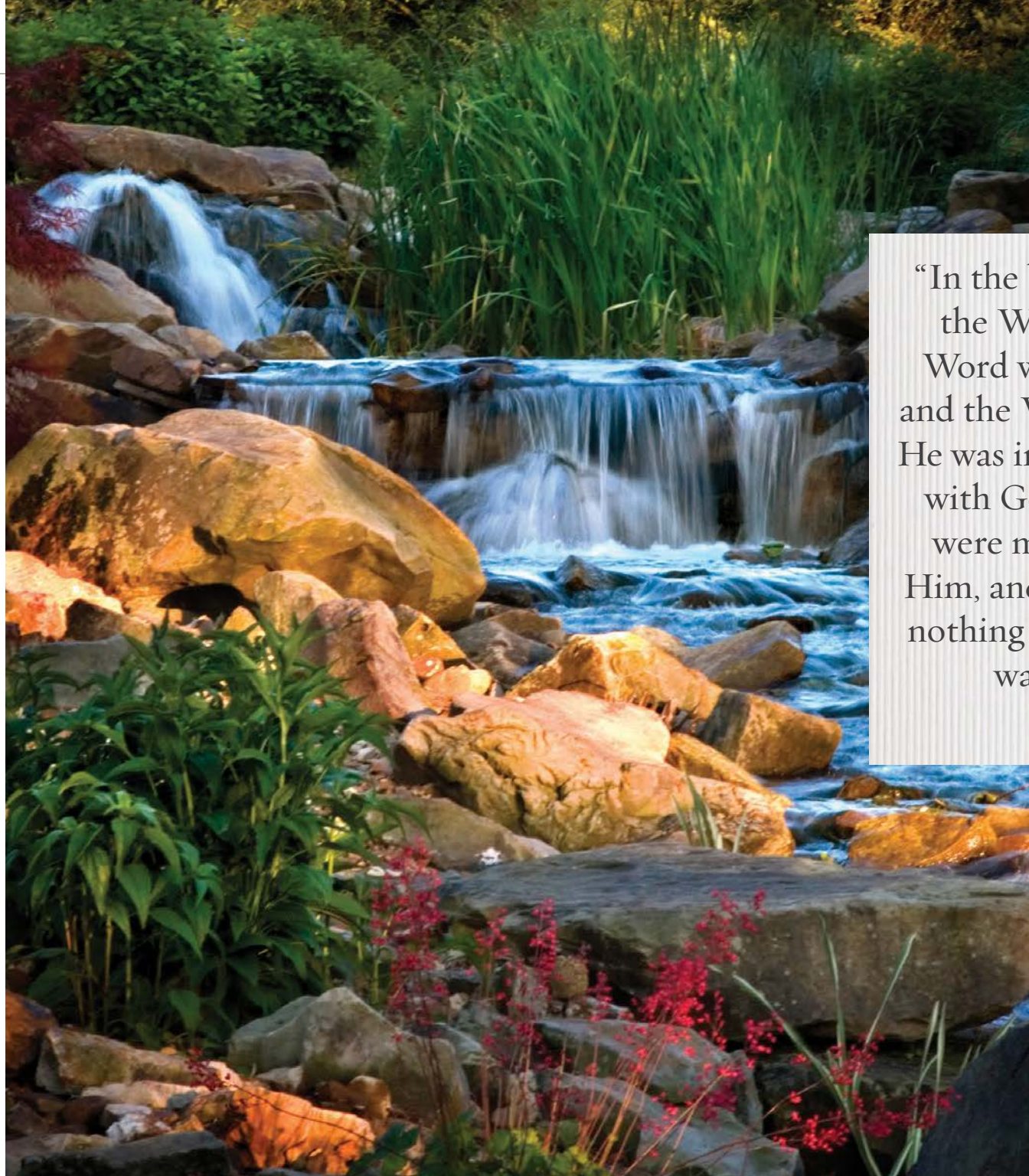




The grounds surrounding the Creation Museum are unique living exhibits that continue to glorify God through His many creations. A visit to the Botanical Gardens is a must during a museum visit. Guests can see the carnivorous bog garden, the rainforest area, the butterfly and hummingbird garden, waterfalls, a swinging bridge, and more as they experience God's handiwork all around them.







“In the beginning was the Word, and the Word was with God, and the Word was God. He was in the beginning with God. All things were made through Him, and without Him nothing was made that was made.”

—JOHN 1:1-3

Bridges, topiaries, pavilions, waterfalls, a pergola, a gazebo, and wildlife each provide a unique perspective on God’s amazing creation.



SCREAMING RAPTOR ZIP LINES





The Creation Museum is excited to present the biggest and best zip lines in the Midwest, featuring exhilarating zip lines and scenic sky bridges.

Are you looking for a fun, family-friendly, outdoor adventure in the greater Cincinnati area? Or maybe you're searching for a thrill and want to soar through the air on the best zip lines in the Midwest. Either way, you don't want to miss the Creation Museum's Zip Line and Canopy Adventure Tours! Featuring over two and a half miles of zip lines and sky bridges and a ropes adventure course, there is something for the whole family to enjoy. Soar over our three-acre lake, through the trees, and over ravines as you or your group move through the course. Whether you are looking for a short excursion or hours of exploring, packages are available for groups large and small. If you are up for the challenge, try the 800-foot line or the 1,800-foot dual racing lines! No matter which you choose, you will get to see God's beautiful creation from a whole new perspective.

